

Алматы (7273)495-231
 Ангарск (3955)60-70-56
 Архангельск (8182)63-90-72
 Астрахань (8512)99-46-04
 Барнаул (3852)73-04-60
 Белгород (4722)40-23-64
 Благовещенск (4162)22-76-07
 Брянск (4832)59-03-52
 Владивосток (423)249-28-31
 Владикавказ (8672)28-90-48
 Владимир (4922)49-43-18
 Волгоград (844)278-03-48
 Вологда (8172)26-41-59
 Воронеж (473)204-51-73
 Екатеринбург (343)384-55-89

Иваново (4932)77-34-06
 Ижевск (3412)26-03-58
 Иркутск (395)279-98-46
 Казань (843)206-01-48
 Калининград (4012)72-03-81
 Калуга (4842)92-23-67
 Кемерово (3842)65-04-62
 Киров (8332)68-02-04
 Коломна (4966)23-41-49
 Кострома (4942)77-07-48
 Краснодар (861)203-40-90
 Красноярск (391)204-63-61
 Курск (4712)77-13-04
 Курган (3522)50-90-47
 Липецк (4742)52-20-81

Магнитогорск (3519)55-03-13
 Москва (495)268-04-70
 Мурманск (8152)59-64-93
 Нижний Новгород (831)429-08-12
 Набережные Челны (8552)20-53-41
 Новокузнецк (3843)20-46-81
 Ноябрьск (3496)41-32-12
 Новосибирск (383)227-86-73
 Омск (3812)21-46-40
 Орел (4862)44-53-42
 Оренбург (3532)37-68-04
 Пенза (8412)22-31-16
 Петрозаводск (8142)55-98-37
 Псков (8112)59-10-37
 Пермь (342)205-81-47

Ростов-на-Дону (863)308-18-15
 Рязань (4912)46-61-64
 Самара (846)206-03-16
 Санкт-Петербург (812)309-46-40
 Саратов (845)249-38-78
 Севастополь (8692)22-31-93
 Саранск (8342)22-96-24
 Симферополь (3652)67-13-56
 Смоленск (4812)29-41-54
 Сочи (862)225-72-31
 Ставрополь (8652)20-65-13
 Сургут (3462)77-98-35
 Сыктывкар (8212)25-95-17
 Тамбов (4752)50-40-97
 Тверь (4822)63-31-35

Тольятти (8482)63-91-07
 Томск (3822)98-41-53
 Тула (4872)33-79-87
 Тюмень (3452)66-21-18
 Ульяновск (8422)24-23-59
 Улан-Удэ (3012)59-97-51
 Уфа (347)229-48-12
 Хабаровск (4212)92-98-04
 Чебоксары (8352)28-53-07
 Челябинск (351)202-03-61
 Череповец (8202)49-02-64
 Чита (3022)38-34-83
 Якутск (4112)23-90-97
 Ярославль (4852)69-52-93

Россия +7(495)268-04-70

Казахстан +7(7172)727-132

Киргизия +996(312)96-26-47

<https://astralpool.nt-rt.ru/> || aow@nt-rt.ru

POOL ACCESS - ACCESSORIES



Anchor with locking bolts



In polished Stainless Steel AISI-316. For Ø 43 mm pipe.

Code	Standard Packaging	Standard Weight kg	Standard Volume m ³
00143	2	1.2	0.003



Ladder foot pad



Made in plastic, angle can be adjusted by rotating the eye ball socket.

Code	Standard Packaging	Standard Weight kg	Standard Volume m ³
00045	50	12.6	0.03
00046	50	14.0	0.03

For Ø 43 mm pipe
 For Ø 28 mm pipe

GRAB RAILS



Handrails in Stainless Steel



In polished S. S. AISI-316. Ø 43 mm pipe. **With fixing flanges** (Supplied with gaskets, fixing plugs, and screws).

Code	Standard Packaging	Standard Weight kg	Standard Volume m ³
00051	2	2.8	0.02
00052	2	4.3	0.04
00053	2	7.9	0.09
00054	2	9.5	0.11



Tee bar



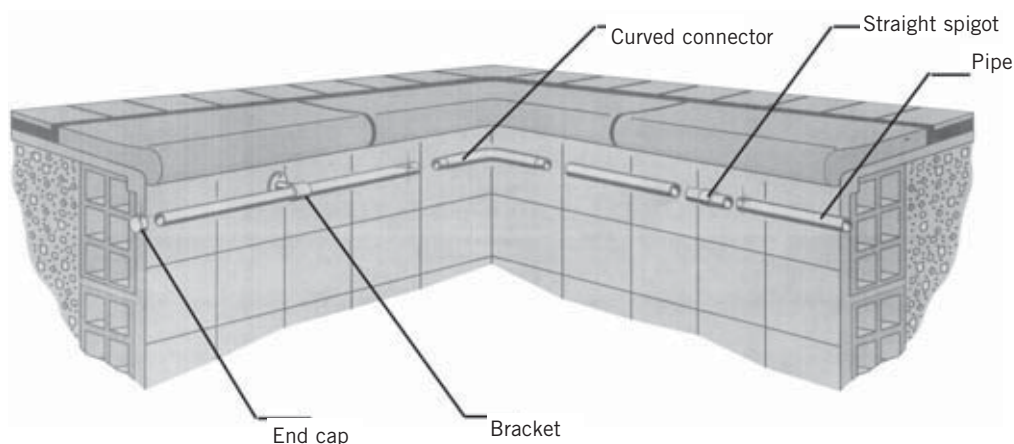
In polished S. S. AISI-316. Ø 43 mm pipe.

Code	Standard Packaging	Standard Weight kg	Standard Volume m ³
00056	1	2.09	0.01

With fixing plates (Supplied with gaskets, fixing plugs, and screws)

HANDRAILS

We also supply pipes and items needed to install grab rails or other decorative features around the edge of the pool.



Straight handrails

In polished Stainless Steel AISI-316. Handrail length: 1 m. Length must be specified when placing order.

	Code	Standard Packaging	Standard Weight kg	Standard Volume m ³
Ø 43 mm tubing with sealed ends	05545	1	1.5	0.002
Ø 43 mm tubing with open ends	19946	1	1.3	0.002
Ø 43 mm tubing with 1 sealed end and the other open	20092	1	1.3	0.002



Straight connector

In polished Stainless Steel AISI-316. For joining Ø 43 mm pipe.

	Code	Standard Packaging	Standard Weight kg	Standard Volume m ³
	09452	1	0.32	0.001



Curved connector

In polished Stainless Steel AISI-316. For joining Ø 43 mm pipe.

	Code	Standard Packaging	Standard Weight kg	Standard Volume m ³
	11286	1	0.3	0.001



End caps

In polished Stainless Steel AISI-316. For Ø 43 mm pipe end.

	Code	Standard Packaging	Standard Weight kg	Standard Volume m ³
	08014	1	0.1	0.001

HANDRAIL BRACKETS

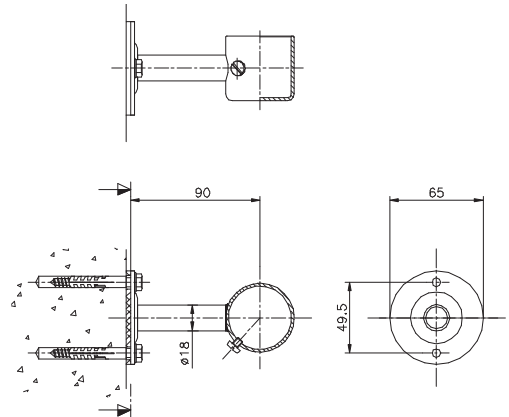


One side closed bracket

For Ø 43 mm pipe. In polished S.S. AISI-316. Supplied with gaskets, rawl plugs and screws.



Code	Standard Packaging	Standard Weight kg	Standard Volume m ³
07789	2	0.6	0.002

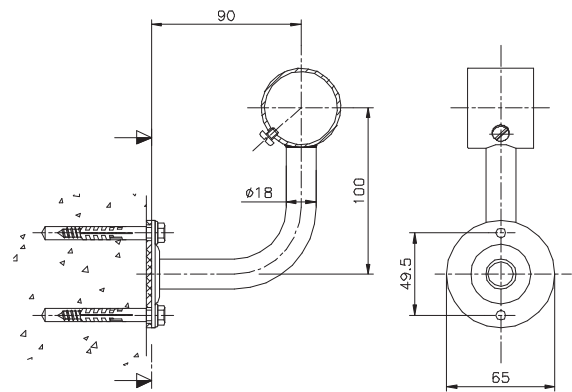


90° Angle handrail support

For Ø 43 mm pipe. In polished S.S. AISI-316. Supplied with gaskets, rawl plugs and screws.



Code	Standard Packaging	Standard Weight kg	Standard Volume m ³
11143	1	1.17	0.002



Fixing plate kit for liner pools

In S.S. AISI-316.



Code	Standard Packaging	Standard Weight kg	Standard Volume m ³
26172	1	0.3	0.002

HANDRAIL BRACKETS

Split bracket

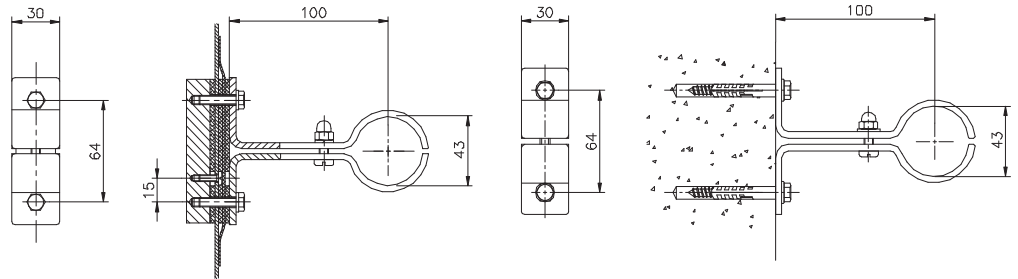
For \varnothing 43 mm pipe. In polished S.S. AISI-316. Supplied with rawl plugs and screws (concrete pool) & with gaskets and screws (liner pool).



	Code	Standard Packaging	Standard Weight kg	Standard Volume m ³
Concrete pool	25342	2	0.72	0.002
Liner pool	28618	2	1.40	0.002

28618

25342

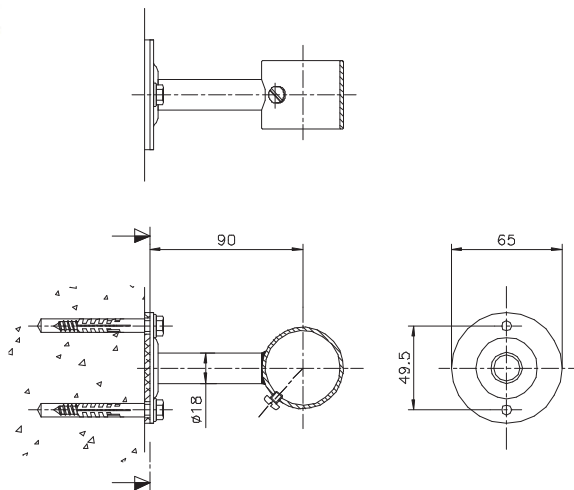


Straight bracket with base plate

For \varnothing 43 mm pipe. In polished S.S. AISI-316. Supplied with gaskets, rawl plugs, and screws.



Code	Standard Packaging	Standard Weight kg	Standard Volume m ³
08013	2	0.5	0.002



LIFE SAVING ACCESSORIES



Lifebuoy holder

In Stainless Steel AISI-304. For use with telescopic handles 01361, 01362, 01363, & 15838.



Code	Standard Packaging	Standard Weight kg	Standard Volume m ³
01368	1	1.46	0.03



Lifebuoy

Made of Styropor covered with orange canvas, outer 700 mm.



Code	Standard Packaging	Standard Weight kg	Standard Volume m ³
01369	6	18.0	0.330



Lifebuoy holder

In Stainless Steel AISI-304. Designed to be hung on wall or fitted on to a lifebuoy holder post (code 01371). Supplied with anchor plugs and screws.



Code	Standard Packaging	Standard Weight kg	Standard Volume m ³
01370	1	1.16	0.004



Lifebuoy holder post

In AISI-304 Stainless Steel, Ø 43 mm. Base plate with 3 holes. Supplied with gaskets, anchor plugs and screws.



Code	Standard Packaging	Standard Weight kg	Standard Volume m ³
01371	1	3.0	0.01

ACCESSORIES FOR COVERS

Accessories

8 mm rubber tensor - 03998



S.S. Spike - 03994



Retractable spike - 40950



S.S. Spike for lawn - 05732



Roller 1.50 m black strap - 25980



Fixkit clip with rubber tensor - 09439



		Code	Standard Packaging	Standard Weight kg.	Standard Volume m ³
S.S. Spike	Per unit	03994	-	-	-
S.S. Spike for lawn	Per unit	05732	-	-	-
Retractable cylindrical spike	Per unit	40950	-	-	-
Retractable anchoring, with spring	Per unit	03995	-	-	-
Dynamometric spring	Per unit	03996	-	-	-
1.50 m black strap for roller	Per unit	25980	-	-	-
8 mm rubber tensor	m ²	03998	-	-	-
8 mm x 60 cm Cabiclic rubber tensor	Per unit	03999	-	-	-
8 mm x 25 cm Cabiclic rubber tensor	Per unit	05736	-	-	-
1.20 m rubber tensor with hooks	Per unit	05734	-	-	-
Fixkit clip with rubber tensor	Per unit	09439	-	-	-

Concealable anchoring, with spring - 03995



Dynamometric spring- 03996



60 cm Cabiclic rubber tensor - 03999



25 cm Cabiclic rubber tensor - 05736

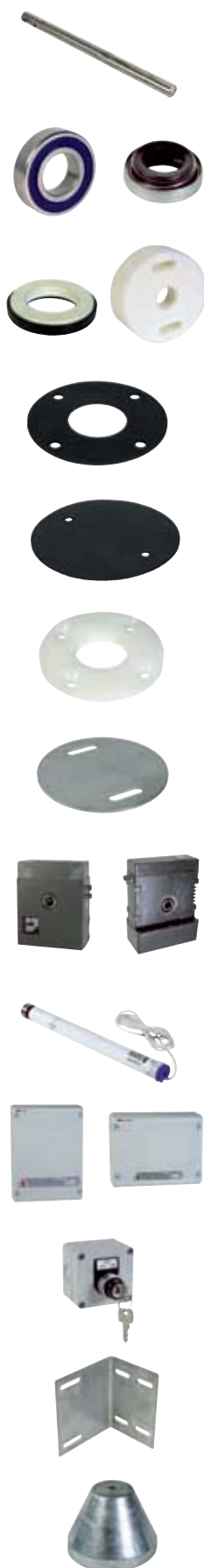


Rubber tensor with hooks - 05734



AUTOMATIC COVERS: ACCESSORIES

Spare parts



	Code	Standard Packaging	Standard Weight kg.	Standard Volume m ³
Stainless Steel. Motor shaft length 490 mm. (standard).	31212	-	-	-
Stainless Steel. Motor shaft length 600 mm.	31213	-	-	-
Stainless steel bearings 62 x 30 x 16 316L.	31214	-	-	-
Watertight cyclam mechanical seal.	31215	-	-	-
Ceramic flange for wall conduit	31216	-	-	-
2 conduit flange gaskets	31217	-	-	-
2 bearing gaskets	31218	-	-	-
Wall conduit flange	31219	-	-	-
Bearing stopper	31220	-	-	-
Bearing	31221	-	-	-
250 Nm 24V geared motor.	31222	-	-	-
120 Nm 24V geared motor.	31223	-	-	-
120 Nm 24V Tubular motor.	31224	-	-	-
220V/24V electrical switchboard.	31225	-	-	-
220V/24V tubular motor electrical switchboard.	31226	-	-	-
3-position key switch with self return.	31227	-	-	-
Stainless steel motor support bracket.	31228	-	-	-
Zamac counterweight.	31229	-	-	-

AUTOMATIC COVERS: ACCESSORIES

Spare parts



	Code	Standard Packaging	Standard Weight kg.	Standard Volume m ³
31230	Switch with key for Carlit model.	-	-	-
31236-31237	Ø 146 mm Aluminium shaft with L. 4 m S. S. shaft	-	-	-
31246	Ø 146 mm Aluminium shaft with L. 5 m S. S. shaft	-	-	-
31249-31250	Ø 146 mm Aluminium shaft with L. 6 m S. S. shaft	-	-	-
31251	71 mm right slat end-cap to be glued.	-	-	-
37212	71 mm left slat end-cap to be glued.	-	-	-
38557-38558	1 lt PVC S3 (thick) glue for end-caps.	-	-	-
8555-38556	1 lt PVC 914 (liquid) glue for end-caps.	-	-	-
38559	Roussillon model slat strap fasteners L. 150 mm	-	-	-
37210	Carlit model slat strap fasteners L. 800 mm	-	-	-
38510-38511	Fixing plate for shaft straps.	-	-	-
38899	Stainless steel screw A4 6 x 20 nuts for fixing plates	-	-	-
34777	1.30 m tensor for counterweight.	-	-	-
38821	220V/24V 400 VA ring transformer.	-	-	-
35151	220V/24V 200 VA ring transformer.	-	-	-
	Rectifier (diode connection) 24V - 25 Amp.	-	-	-
	15 Amp thermal circuit breaker.	-	-	-
	10000 microfarad filter condenser.	-	-	-
	Limit switch cam for Aquajunior MTS 20/30 motors.	-	-	-
	Electronic card for Aquamat motor.	-	-	-
	Electronic card for Aquajunior motor.	-	-	-
	Watertight limit switch.	-	-	-
	Stainless steel. key 8 x 7 mm L. 60 mm.	-	-	-
	S.S. bolts 6 pans M10 x 70 mm for fixing the bearing	-	-	-
	Lead battery REC 12V-12AH.	-	-	-
	White right cover to glue to lug.	-	-	-
	White left cover to glue to lug.	-	-	-
	Blue right cover to glue to lug.	-	-	-
	Blue left cover to glue to lug.	-	-	-
	Sand right cover to glue to lug.	-	-	-
	Sand left cover to glue to lug.	-	-	-
	Carlit solar cover + electronic card.	-	-	-
	Solar battery charger for Carlit or Narbonne models	-	-	-
	Additional box for 120 Nm electrolysis (Carlit and Narbonne)	-	-	-
	Additional box for 150 Nm electrolysis (Carlit and Narbonne)	-	-	-
	220V/12V-100VA Carlit tubular 150 Nm motor power supply	-	-	-
	Power supply at water level with dry contacts for electrolysis	-	-	-
	Power supply box 250 N PL3000-24 V tubular motor	-	-	-
	Power supply for motor at water level	-	-	-
	Motor side vertical bracket with gears for Roussillon model at water level	-	-	-

The lane ropes are supplied with floats, polyester cord (00210) and hook (00207).



LANE ROPES



BCN03 Competition lane rope model

The lane ropes are supplied with float units, Stainless Steel 6 mm cable (28808) and hook (00207). Floats with inner turbine mechanism.

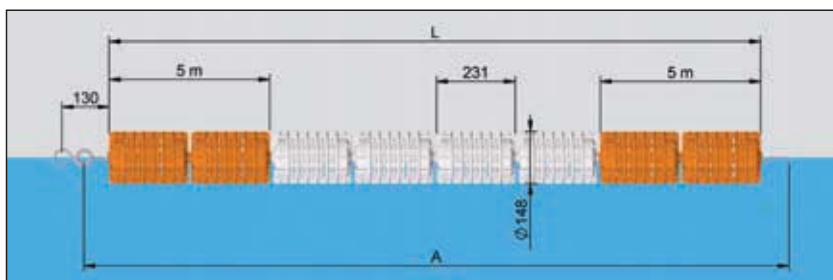
	Code	Standard Packing	Standard Weight	Standard Volume m ³
25 m length	28802	1	-	-
50 m length	28804	1	-	-



BCN03 Eco lane rope model

The lane ropes are supplied with float units, Stainless Steel 6 mm cable (28808) and hook (00207). Floats without inner turbine mechanism.

	Code	Standard Packing	Standard Weight	Standard Volume m ³
25 m length	28803	1	-	-
50 m length	28805	1	-	-



Code	L (m)	A (m) cable	Nr. of blue BCN03 floats	Nr. of red BCN03 floats
28802	25	30	44	64
28804	50	60	44	172
28803	25	30	44	64
28805	50	60	44	172

Other colors in accordance with the rules of the FINA availables.



Sydney model

New

New lane rope model made by Ø 148 mm. Floats in accordance with the rules of the International Swimming Federation (FINA), and the FR 3 swimming pools for the Olympic Games or World Championships regulations. The lane ropes are supplied with floats, Stainless Steel cord of 6 mm (28808) and hook (00207).

	Code	Standard Packing	Standard Weight	Standard Volume m ³
25 m length				
Sydney lane ropes 25M Blue-Red	54475	32	3.20	0.068
Sydney lane ropes 25M Green-Red	54476	32	3.20	0.068
Sydney lane ropes 25M Yellow-Red	54477	32	3.20	0.068
Sydney lane ropes 25M White-Red	54478	32	3.20	0.068
50 m length				
Sydney lane ropes 50M Blue - Red	54479	32	3.20	0.068
Sydney lane ropes 50M Green-Red	54481	32	3.20	0.068
Sydney lane ropes 50M Yellow - Red	54576	32	3.20	0.068
Sydney lane ropes 50M White - Red	54577	32	3.20	0.068

The lane ropes are supplied with floats, polyester cord (00210) and hook (00207).



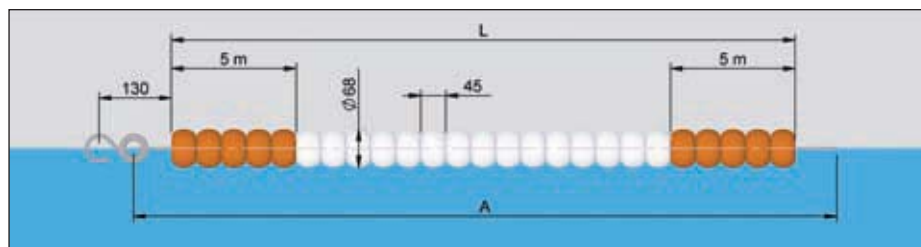
LANE ROPES



Rome model

25 m length
50 m length

Code	Standard Packing	Standard Weight	Standard Volume m ³
00181	1	9.0	0.200
00183	1	16.0	0.620



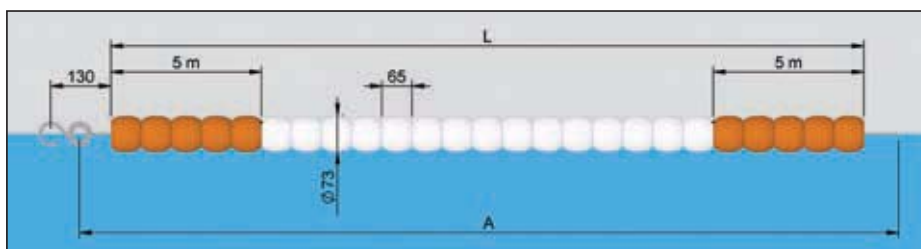
Code	L (m)	A (m) cable	Nr. of orange Rome floats	Nr. of white Rome floats
00181	25	27	232	318
00183	50	52	232	868



92 model

25 m length
50 m length

Code	Standard Packing	Standard Weight	Standard Volume m ³
00184	1	9.0	0.200
00186	1	16.0	0.620



Code	L (m)	A (m) cable	Nr. of orange 92 floats	Nr. of white 92 floats
00184	25	27	152	229
00186	50	52	152	612

The lane ropes are supplied with floats, polyester cord (00210) and hook (00207).



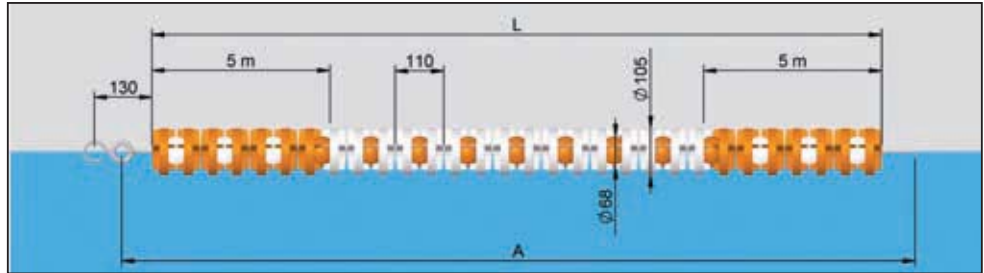
LANE ROPES



Moscow model

25 m length
50 m length

Code	Standard Packing	Standard Weight	Standard Volume m ³
00190	1	9.0	0.200
00192	1	16.0	0.620



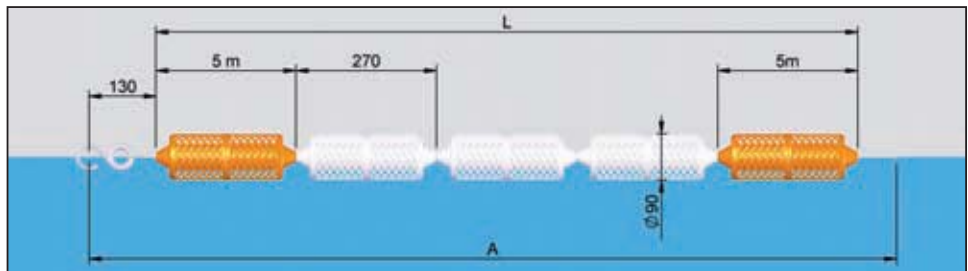
Code	L (m)	A (m) cuerda	Nr. of orange Moscow floats	Nr. of orange Rome floats	Nr. of white Moscow floats	Nr. of white Rome floats
00190	25	27	192	96	286	143
00192	50	52	192	96	756	378



Montreal model

25 m length
50 m length

Code	Standard Packing	Standard Weight	Standard Volume m ³
00193	1	19.0	0.340
00195	1	39.0	0.680



NOTE: It is possible to supply any length, colour combination and rope material under request.

Code	L (m)	A (m) cable	Nr. of orange Montreal floats	Nr. of white Montreal floats
00193	25	27	38	55
00195	50	52	38	149

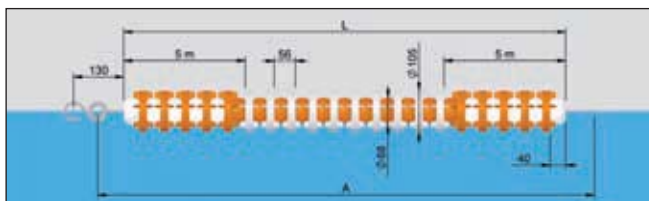
LANE ROPES



Seoul model

25 m length
50 m length

Code	Standard Packing	Standard Weight	Standard Volume m ³
00196	1	28.0	0.340
00198	1	50.0	0.620



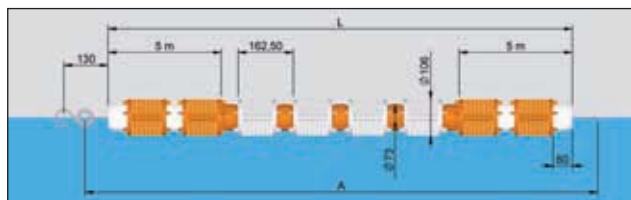
Code	L (m)	A (m) cable	Nr. of orange Seoul floats	Nr. of white Rome floats	Nr. of white Seoul floats	Nr. of orange Rome floats
00196	25	27	178	178	268	269
00198	50	52	178	178	714	715



Barcelona model

25 m length
50 m length

Code	Standard Packing	Standard Weight	Standard Volume m ³
00199	1	40.0	0.340
00201	1	78.0	0.680



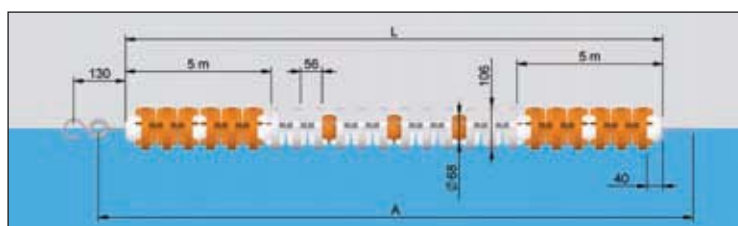
Code	L (m)	A (m) cable	Nr. of orange Barcelona floats	Nr. of white 92 floats	Nr. of white Barcelona floats	Nr. of orange 92 floats
00199	25	27	60	62	91	90
00201	50	52	60	62	242	241



France model

25 m length
50 m length

Code	Standard Packing	Standard Weight	Standard Volume m ³
00202	1	40.0	0.340
00204	1	78.0	0.680



Code	L (m)	A (m) cable	Nr. of orange France floats	Nr. of white Moscow floats	Nr. of orange Rome floats	Nr. of white France floats	Nr. of orange Moscow floats	Nr. of white Rome floats
00202	25	27	62	182	91	92	120	60
00204	50	52	62	486	243	243	120	60

NOTE: It is possible to supply any length, colour combination and rope material under request.

FLOATS



BCN03 model



Supplied with inner turbine mechanism.

	Code	Standard Packing	Standard Weight	Standard Volume m ³
Colour white	28204	-	-	-
green	28425	-	-	-
blue	28423	-	-	-
red	28424	-	-	-



BCN03 Eco model



Supplied without inner turbine mechanism.

	Code	Standard Packing	Standard Weight	Standard Volume m ³
Colour white	28798	-	-	-
green	28801	-	-	-
blue	28799	-	-	-
red	28800	-	-	-



Rome model



	Code	Standard Packing	Standard Weight	Standard Volume m ³
Colour white	00149	500	7.0	0.110
orange	00150	500	7.0	0.110
blue	00151	500	7.0	0.110
red	00152	500	7.0	0.110



92 model



	Code	Standard Packing	Standard Weight	Standard Volume m ³
Colour white	00153	140	3.0	0.070
orange	00154	140	3.0	0.070
blue	00155	140	3.0	0.070
red	00156	140	3.0	0.070



Moscow model



	Code	Standard Packing	Standard Weight	Standard Volume m ³
Colour white	00161	150	7.0	0.070
orange	00162	150	7.0	0.070
blue	00163	150	7.0	0.070
red	00164	150	7.0	0.070

FLOATS



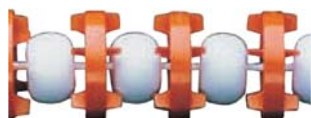
Montreal model



	Code	Standard Packing	Standard Weight	Standard Volume m ³
Colour white	00165	28	7.0	0.070
orange	00166	28	7.0	0.070
blue	00167	28	7.0	0.070
red	00168	28	7.0	0.070



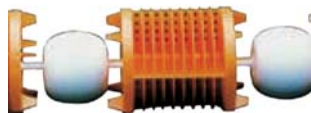
Seoul model



	Code	Standard Packing	Standard Weight	Standard Volume m ³
Colour white	00169	200	8.0	0.070
orange	00170	200	8.0	0.070
blue	00171	200	8.0	0.070
red	00172	200	8.0	0.070



Barcelona model



	Code	Standard Packing	Standard Weight	Standard Volume m ³
Colour white	00173	45	10.0	0.070
orange	00174	45	10.0	0.070
blue	00175	45	10.0	0.070
red	00176	45	10.0	0.070



France model



	Code	Standard Packing	Standard Weight	Standard Volume m ³
Colour white	00177	100	5.5	0.070
orange	00178	100	5.5	0.070
blue	00179	100	5.5	0.070
red	00180	100	5.5	0.070

LANE ROPE STORAGE EQUIPMENT

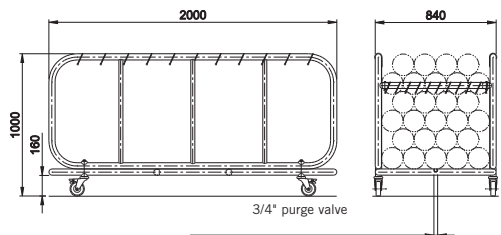


BCN03 Lane rope storage basket



A new trolley designed to transport and store the BCN03 Lane ropes after use in the swimming pool. The BCN03 lane rope storage basket is manufactured of AISI-316 Stainless Steel and includes a PVC bag for collecting excess water from the float lines. Due to the bag's bottom outlets, it is emptied in a controlled manner with no water spillage. The trolley has four castor wheels for maximum mobility. Two of these fitted with brakes. It can store a lane rope up to 50 m long (or 2 of 25) and can be used for all lane rope models.

Code	Standard Packing	Standard Weight	Standard Volume m ³
28623	1	55.0	0.389



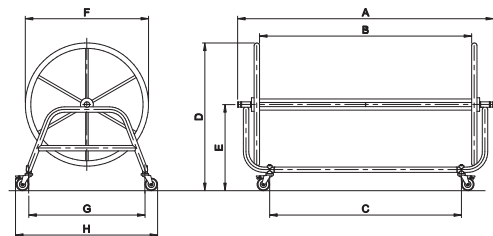
Lane rope roller



Made in Stainless Steel AISI-304, fitted with a large wheel for operation. It is mounted on 4 castor wheels for easy handling. Two of these are fitted with brakes.

Code	Standard Packing	Standard Weight	Standard Volume m ³
27481	1	36.8	0.50
20762	1	46.3	0.54

Width 1.2 m
Width 1.8 m



NUMBER OF LANE ROPE COLLECTED

Model	1.2 m			1.8 m		
	25 m	33 m	50 m	25 m	33 m	50 m
ROME	8	6	4	12	9	6
92	8	6	4	12	9	6
MOSCOW	4	2	2	6	3	3
MONTREAL	4	4	2	6	6	3
SEOUL	4	2	2	6	3	3
BARCELONA	4	4	2	6	6	3
FRANCE	4	4	2	6	6	3

Code	A	B	C	D	E	F	G	H
27481	1484	1135	974	1175	685	980	924	1130
20762	2036	1687	1526					

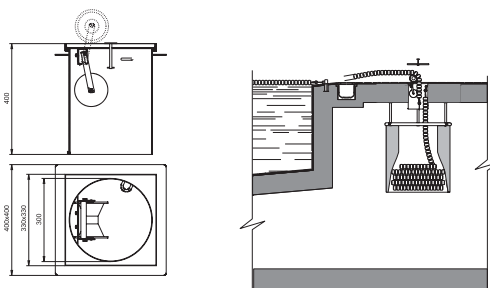


Under deck lane rope storage system



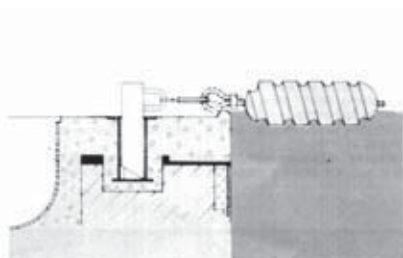
Made of AISI-316, allows the storage of the float lines beneath the deck. The float line box is embedded in the pool surround and holds the retractable reel over which the float line slides into the hole. This unit can be complemented with a lane rope collecting bag if required.

Code	Standard Packing	Standard Weight	Standard Volume m ³
15842	1	12.8	0.08



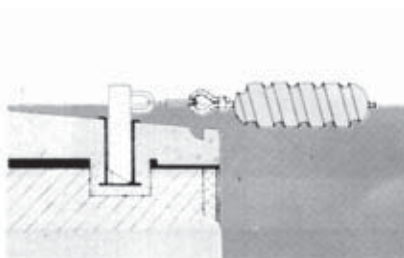
LANE ROPE ACCESSORIES

Zurich/Wiesbaden installation diagram



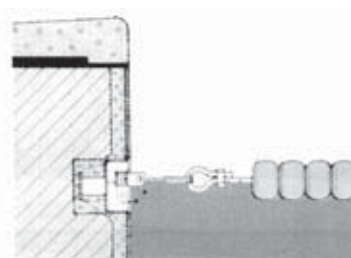
Anchor code 00141
Lane rope support code 00140

Finnish type installation diagram



Anchor code 00142
Lane rope support code 00140

Standard installation diagram



Anchoring cup code 09206
code 09207
code 00205
code 00206



Lane rope anchor



Made in Stainless Steel AISI-316. To use with anchoring fixture 00141 and 00142.

Code	Standard Packing	Standard Weight	Standard Volume m ³
00140	2	0.63	0.003



Concrete anchoring cup with central rod



Made in Stainless Steel AISI-316.

For concrete pool

Code	Standard Packing	Standard Weight	Standard Volume m ³
09206	1	0.4	0.001



Anchoring cup with central rod



Made in Stainless Steel AISI-316.

For pre-fabricated pools with flange, gasket and screws

Code	Standard Packing	Standard Weight	Standard Volume m ³
09207	1	0.5	0.001



Retractable anchoring cup



Made in Stainless Steel AISI-316.

For concrete pool

Code	Standard Packing	Standard Weight	Standard Volume m ³
00205	1	0.46	0.001

LANE ROPE ACCESSORIES



Retractable anchoring cup



Made in Stainless Steel AISI-316.

For prefabricated pools with flange, gaskets and screws

Code	Standard Packing	Standard Weight	Standard Volume m ³
00206	1	0.6	0.001



Lane rope ratchet



Chrome plated brass.

Code	Standard Packing	Standard Weight	Standard Volume m ³
00208	1	0.97	0.002



Lane rope ratchet



Made in Stainless Steel AISI-316.

Code	Standard Packing	Standard Weight	Standard Volume m ³
00209	1	0.2	0.001



Lane rope spring



Made in Stainless Steel AISI-304 with plate to attach cable.

Code	Standard Packing	Standard Weight	Standard Volume m ³
01468	1	0.62	0.002



Lane rope hook



Made in Stainless Steel AISI-304.

Code	Standard Packing	Standard Weight	Standard Volume m ³
00207	100	5	0.01

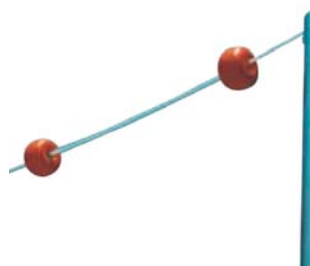
LANE ROPE ACCESSORIES



Cords and cables

	Code	Standard Packing	Standard Weight	Standard Volume m ³
Polyester Ø 7 mm	00210	110 m	2.0	0.090
Stainless Steel AISI-316 Ø 4 x 6 mm with plastic coating DIN 3055	00211	-	0.1	0.001
BCN03 cable Stainless Steel Ø 6 mm without plastic coating	28808	-	-	-

INDICATORS



False start indicators

Please indicate pool width when placing your order.

Comprises 2 posts in S.S. AISI-316 (one with pulley and quick release cord). Height 1.8 m. Anchoring socket not included.

False start posts:

- Pool width up to 21 m
Ø 43 mm pipe for use with anchoring sockets 00141 and 00142
- Pool width over 21 m
Ø 48 mm pipe for use with anchoring sockets 19960 and 19961

False start floats:

Polyester cord and floats

	Code	Standard Packing	Standard Weight	Standard Volume m ³
	19950	1	5.6	0.01
	19951	1	9.4	0.01
	19954	1	-	-



Backstroke turn indicators

Please indicate pool width when placing your order.

Comprises 4 posts in Stainless Steel AISI-316. Height 1.8 m. Anchoring sockets not included.

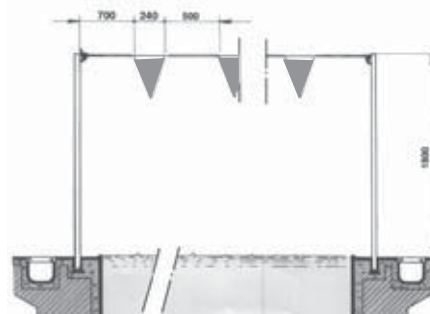
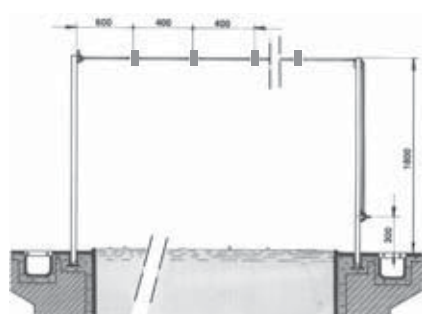
Backstroke turn indicator posts

- Pool width up to 21 m
Ø 43 mm pipe for use with anchoring sockets 00141 and 00142
- Pool width over 21 m
Ø 48 mm pipe for use with anchoring sockets 19960 and 19961

Backstroke turn indicator bunting

2 Polyester cord and bunting

	Code	Standard Packing	Standard Weight	Standard Volume m ³
	19952	1	11.2	0.03
	19953	1	20.0	0.03
	19955	1	-	-



TURNING PANELS



Turning panels

In Stainless Steel AISI-316 with plastic lattice screen. Height 300 mm. Fixing support (00139) is not included.

Lane width 2 m
Lane width 2.5 m

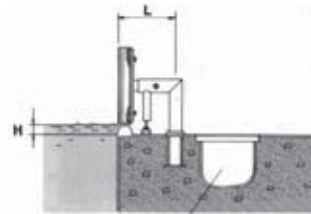
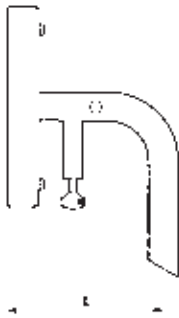
Code	Standard Packing	Standard Weight	Standard Volume m ³
00137	1	13.6	0.040
00138	1	16.5	0.051



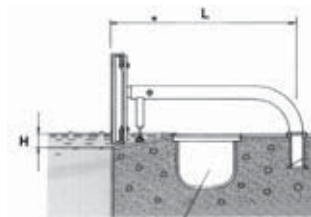
Fixing support for turning panels

In Stainless Steel AISI-316 for use with anchoring sockets 00141 and 00142. Please indicate dimension "H", "L" and type of overflow when ordering.

Code	Standard Packing	Standard Weight	Standard Volume m ³
00139	1	4.0	0.054



ZURICH-WIESBADEN



FINNISH

ANCHORING DETAILS WHEN MEASUREMENT «L» IS LESS THAN 500 mm.



ANCHORING DETAILS WHEN MEASUREMENT «L» IS OVER 500 mm.



ANCHORING SOCKETS



Horizontal flange anchoring sockets



Zurich-Wiesbaden. In S.S. AISI-316.

For pipe Ø 43 mm
For pipe Ø 48 mm

Code	Standard Packing	Standard Weight	Standard Volume m ³
00141	2	1.17	0.002
19960	2	1.3	0.002



Angled flange anchoring socket



Finnish. In S.S. AISI-316.

For pipe Ø 43 mm
For pipe Ø 48 mm

Code	Standard Packing	Standard Weight	Standard Volume m ³
00142	2	1.13	0.002
19961	2	1.26	0.002



Anchoring socket with locking bolts



With bolts. In S.S. AISI-316.

Code	Standard Packing	Standard Weight	Standard Volume m ³
00143	2	1.47	0.003

Алматы (7273)495-231
Ангарск (3955)60-70-56
Архангельск (8182)63-90-72
Астрахань (8512)99-46-04
Барнаул (3852)73-04-60
Белгород (4722)40-23-64
Благовещенск (4162)22-76-07
Брянск (4832)59-03-52
Владивосток (423)249-28-31
Владикавказ (8672)28-90-48
Владимир (4922)49-43-18
Волгоград (844)278-03-48
Вологда (8172)26-41-59
Воронеж (473)204-51-73
Екатеринбург (343)384-55-89

Иваново (4932)77-34-06
Ижевск (3412)26-03-58
Иркутск (395)279-98-46
Казань (843)206-01-48
Калининград (4012)72-03-81
Калуга (4842)92-23-67
Кемерово (3842)65-04-62
Киров (8332)68-02-04
Коломна (4966)23-41-49
Кострома (4942)77-07-48
Краснодар (861)203-40-90
Красноярск (391)204-63-61
Курск (4712)77-13-04
Курган (3522)50-90-47
Липецк (4742)52-20-81

Магнитогорск (3519)55-03-13
Москва (495)268-04-70
Мурманск (8152)59-64-93
Набережные Челны (8552)20-53-41
Нижний Новгород (831)429-08-12
Новокузнецк (3843)20-46-81
Ноябрьск (3496)41-32-12
Новосибирск (383)227-86-73
Омск (3812)21-46-40
Орел (4862)44-53-42
Оренбург (3532)37-68-04
Пенза (8412)22-31-16
Петрозаводск (8142)55-98-37
Псков (8112)59-10-37
Пермь (342)205-81-47

Ростов-на-Дону (863)308-18-15
Рязань (4912)46-61-64
Самара (846)206-03-16
Санкт-Петербург (812)309-46-40
Саратов (845)249-38-78
Севастополь (8692)22-31-93
Саранск (8342)22-96-24
Симферополь (3652)67-13-56
Смоленск (4812)29-41-54
Сочи (862)225-72-31
Ставрополь (8652)20-65-13
Сургут (3462)77-98-35
Сыктывкар (8212)25-95-17
Тамбов (4752)50-40-97
Тверь (4822)63-31-35

Тольятти (8482)63-91-07
Томск (3822)98-41-53
Тула (4872)33-79-87
Тюмень (3452)66-21-18
Ульяновск (8422)24-23-59
Улан-Удэ (3012)59-97-51
Уфа (347)229-48-12
Хабаровск (4212)92-98-04
Чебоксары (8352)28-53-07
Челябинск (351)202-03-61
Череповец (8202)49-02-64
Чита (3022)38-34-83
Якутск (4112)23-90-97
Ярославль (4852)69-52-93

Россия +7(495)268-04-70

Казахстан +7(7172)727-132

Киргизия +996(312)96-26-47