

## POOL COVERS AND ROLLERS



- 382 • Thermal covers for summer
- 383 • Premium thermal covers
- 384 • Thermal covers - foam
- 385 • Protection covers for winter
- 388 • Accessories for covers
- 391 • Storage rollers for covers
- 394 • Automatic covers
- 414 • Automatic covers: Accessories
- 418 • Telescopic covers

**Алматы** (7273)495-231  
**Ангарск** (3955)60-70-56  
**Архангельск** (8182)63-90-72  
**Астрахань** (8512)99-46-04  
**Барнаул** (3852)73-04-60  
**Белгород** (4722)40-23-64  
**Благовещенск** (4162)22-76-07  
**Брянск** (4832)59-03-52  
**Владивосток** (423)249-28-31  
**Владикавказ** (8672)28-90-48  
**Владимир** (4922)49-43-18  
**Волгоград** (844)278-03-48  
**Вологда** (8172)26-41-59  
**Воронеж** (473)204-51-73  
**Екатеринбург** (343)384-55-89

**Иваново** (4932)77-34-06  
**Ижевск** (3412)26-03-58  
**Иркутск** (395)279-98-46  
**Казань** (843)206-01-48  
**Калининград** (4012)72-03-81  
**Калуга** (4842)92-23-67  
**Кемерово** (3842)65-04-62  
**Киров** (8332)68-02-04  
**Коломна** (4966)23-41-49  
**Кострома** (4942)77-07-48  
**Краснодар** (861)203-40-90  
**Красноярск** (391)204-63-61  
**Курск** (4712)77-13-04  
**Курган** (3522)50-90-47  
**Липецк** (4742)52-20-81

**Магнитогорск** (3519)55-03-13  
**Москва** (495)268-04-70  
**Мурманск** (8152)59-64-93  
**Набережные Челны** (8552)20-53-41  
**Нижний Новгород** (831)429-08-12  
**Новокузнецк** (3843)20-46-81  
**Ноябрьск** (3496)41-32-12  
**Новосибирск** (383)227-86-73  
**Омск** (3812)21-46-40  
**Орел** (4862)44-53-42  
**Оренбург** (3532)37-68-04  
**Пенза** (8412)22-31-16  
**Петрозаводск** (8142)55-98-37  
**Псков** (8112)59-10-37  
**Пермь** (342)205-81-47

**Ростов-на-Дону** (863)308-18-15  
**Рязань** (4912)46-61-64  
**Самара** (846)206-03-16  
**Санкт-Петербург** (812)309-46-40  
**Саратов** (845)249-38-78  
**Севастополь** (8692)22-31-93  
**Саранск** (8342)22-96-24  
**Симферополь** (3652)67-13-56  
**Смоленск** (4812)29-41-54  
**Сочи** (862)225-72-31  
**Ставрополь** (8652)20-65-13  
**Сургут** (3462)77-98-35  
**Сыктывкар** (8212)25-95-17  
**Тамбов** (4752)50-40-97  
**Тверь** (4822)63-31-35

**Тольятти** (8482)63-91-07  
**Томск** (3822)98-41-53  
**Тула** (4872)33-79-87  
**Тюмень** (3452)66-21-18  
**Ульяновск** (8422)24-23-59  
**Улан-Удэ** (3012)59-97-51  
**Уфа** (347)229-48-12  
**Хабаровск** (4212)92-98-04  
**Чебоксары** (8352)28-53-07  
**Челябинск** (351)202-03-61  
**Череповец** (8202)49-02-64  
**Чита** (3022)38-34-83  
**Якутск** (4112)23-90-97  
**Ярославль** (4852)69-52-93

Россия +7(495)268-04-70

Казахстан +7(7172)727-132

Киргизия +996(312)96-26-47

<https://astralpool.nt-rt.ru/> || [aow@nt-rt.ru](mailto:aow@nt-rt.ru)

## THERMAL COVERS FOR SUMMER



BUBBLE

### Bubble model 400 µm - blue

		Code	Standard Packaging	Standard Weight kg.	Standard Volume m <sup>3</sup>
Without eyelets	Pool Type				
	Standard	09296	-	-	-
DeLuxe Model	Freeform	06214	-	-	-
	Standard	09295	-	-	-
	Freeform	03975	-	-	-

### Bubble model 400 µm - blue/black

		Code	Standard Packaging	Standard Weight kg.	Standard <sup>d</sup> Volume m <sup>3</sup>
DeLuxe Model	Pool Type				
	Standard	16185	-	-	-
	Freeform	11483	-	-	-



BLUE/BLACK BUBBLE

### Steps and accessories bubble models

	Code	Standard Packaging	Standard Weight kg.	Standard Volume m <sup>3</sup>
Straight stairs fixed price	06215	-	-	-
Roman stairs fixed price	06217	-	-	-
Other stairs fixed price	06218	-	-	-
Special cut pieces for stairs	03976	-	-	-
Additional nickel-plated brass eyelet	04001	-	-	-

The accessories list is found in page 388.

### TECHNICAL FEATURES Floating Isothermal "Bubble" Covers

Composition	Polyethylene based
Joints	Ultrasonic welding
Borders	Stitched Polyethylene strips
NB Model	Only cut, without eyelets
Eco Model	Eyelets, lengthwise on both the sides
DeLuxe Model	Perimetral eyelets
Fixing	Eyelets on both ends of one long side.
	Eyelets at approx. every 65 cm on the opposite side
Composition	Nickel plated brass eyelets
Standard Packaging	Supplied in cardboard box in a protection bag and with instructions leaflet

**PREMIUM THERMAL COVERS**

**Ultra-Thermal model 500 µm - Blue/Gold**

		Code	Standard Packaging	Standard Weight kg.	Standard Volume m <sup>3</sup>
DeLuxe model	<b>Pool type</b>				
	Standard	40837	-	-	-
	Free form	40839	-	-	-


**High resistance model 500 µm – Reinforced Blue**

		Code	Standard Packaging	Standard Weight kg.	Standard Volume m <sup>3</sup>
Without eyelets	<b>Pool type</b>				
	Standard	40840	-	-	-
	Free form	40842	-	-	-
DeLuxe model	Standard	40841	-	-	-
	Free form	40843	-	-	-

**Steps and accessories for premium models**

	Code	Standard Packaging	Standard Weight kg.	Standard Volume m <sup>3</sup>
Straight stairs fixed price	41149	-	-	-
Roman stairs fixed price	41150	-	-	-
Other stairs fixed price	41151	-	-	-
Special cut pieces for stairs	41152	-	-	-

## THERMAL COVERS - FOAM



FOAM

### 5 mm Foam cover

		Code	Standard Packaging	Standard Weight kg.	Standard <sup>d</sup> Volume m <sup>3</sup>
Eco Model	Pool Type				
	Standard	09297	-	-	-
	Non-Standard	03983	-	-	-
DeLuxe Model	Freeform	03992	-	-	-
	Standard	09298	-	-	-
	Non-Standard	03991	-	-	-
	Freeform	03984	-	-	-

### Steps and foam models

	Code	Standard Packaging	Standard Weight kg.	Standard Volume m <sup>3</sup>
Straight stairs fixed price	06215M	-	-	-
Roman stairs fixed price	06217M	-	-	-
Other stairs fixed price	06218M	-	-	-
Special cut pieces for stairs	03993	-	-	-
Additional nickel-plated brass eyelet	04001	-	-	-

**Attention:** Unless specified in the order, the stair cover is supplied welded to the pool cover, applying the corresponding surcharge.

The cover classification into Standard, non-standard and freeform covers are based on the different shapes indicated in the catalogue.

The accessories list is found in page 388.

- The "eco" models are provided with eyelets along side both short sides.
- The "Deluxe" models are provided with perimetral eyelets.

TECHNICAL FEATURES Foam Covers	
Composition	Reticulate type Polyethylene based foam
Joints	Thermal welding using double sided Polyethylene ribbons
Borders	Stitched PVC strips
Eco Model	Eyelets, lengthwise on short the sides
DeLuxe Model	Perimetral eyelets
Fixing	Eyelets on both ends of one short side. Eyelets at approx. every 65 cm on the opposite side
Composition	Nickel plated brass eyelets
Option	Lengthwise floating Polyethylene foam reinforcement
Standard Packaging	Supplied rolled duly protected with a cover SLEEVE.

**PROTECTION COVERS FOR WINTER**



BLUE



GREEN



BLUE DELUXE MODEL



GREEN DELUXE MODEL

**Gauze type - Blue model**

		Code	Standard Packaging	Standard Weight kg.	Standard Volume m <sup>3</sup>
Eco Model	Pool Type				
	Standard	09285	-	-	-
DeLuxe Model	Free form	03868	-	-	-
	Standard	09286	-	-	-
	Free form	03877	-	-	-

**Gauze type - Green model**

		Code	Standard Packaging	Standard Weight kg.	Standard Volume m <sup>3</sup>
Eco Model	Pool Type	09283	-	-	-
DeLuxe Model	Standard	09284	-	-	-

**Steps and accessories gauze models**

	Code	Standard Packaging	Standard Weight kg.	Standard Volume m <sup>3</sup>
Straight stairs-fixed price	05755	-	-	-
Roman stairs-fixed price	05756	-	-	-
Other stairs-fixed price	06219	-	-	-
Special cut pieces for stairs	03869	-	-	-

**Classification:** The cover classification into Standard, non-standard and freeform shaped covers are based on the different shapes indicated in the catalogue.

The accessories list is found in page 388.

**TECHNICAL FEATURES**  
Gauze Models

Composition	Wetted Poliethilene fabric 230 g/m <sup>2</sup>
Joints	English seam
Borders	Stitched PVC strips (Eco Model) Perimetral eyelets and triangular reinforcement on the corners (for Deluxe Model)
Eco fixing	With eyelets + Double pressed rubber tensor + S.S. anchoring fixture Distance between rubber tensors = 70 cm
DeLuxe fixing	Distance between eyelets = approx. 20 cm With straps + dynamometric spring + S.S. anchoring fixture Distance between straps = approx.1 m. Overlapping = 50 cm
Standard Packaging	Supplied in cardboard box in a protected bag and with instructions leaflet

## PROTECTION COVERS FOR WINTER



### PVC Intersup opaque model - blue/ivory

		Code	Standard Packaging	Standard Weight kg.	Standard <sup>d</sup> Volume m <sup>3</sup>
Eco Model	Pool Type				
	Standard	09338	-	-	-
DeLuxe Model	Free form	06198	-	-	-
	Standard	09339	-	-	-
	Free form	06208	-	-	-

BLUE ECO INTERSUP



### PVC Intersup opaque model - green/ivory

		Code	Standard Packaging	Standard Weight kg.	Standard <sup>d</sup> Volume m <sup>3</sup>
Eco Model	Pool Type				
	Standard	09526	-	-	-
DeLuxe Model	Free form	09528	-	-	-
	Standard	09529	-	-	-
	Free form	09531	-	-	-

BLUE LUXE INTERSUP

### Steps and others for Intersup models

	Code	Standard Packaging	Standard Weight kg.	Standard Volume m <sup>3</sup>
Straight stairs-fixed price	05755	-	-	-
Roman stairs-fixed price	05756	-	-	-
Other stairs-fixed price	06219	-	-	-
Special cut pieces for stairs	03869	-	-	-
Additional nickel-plated brass eyelet	04001	-	-	-



### Fixpool opaque model blue/beige

		Code	Standard Packaging	Standard Weight kg.	Standard Volume m <sup>3</sup>
Blue/beige	Standard	09291	-	-	-
	Non-Standard	09292	-	-	-
	Freeform	09293	-	-	-

BLUE FIXPOOL INTERSUP

**Classification:** The cover classification into Standard, non-standard and freeform covers is based on the different shapes indicated in the catalogue.

The accessories list is found in page 388.

**PROTECTION COVERS FOR WINTER**

**Technical Features**

TECHNICAL FEATURES Intersup Eco Covers	
Composition	PVC fabric, reinforced double side 550 g/m <sup>2</sup>
Joints	High frequency welding
Borders	Perimetral hem, joined by high Frequency welding
Fixing	nickel plated brass eyelets + Double pressed tensor rubber + S.S. anchoring fixture Distance between rubber tensors = 70 cm Distance between eyelets = approx. 20 cm.
Grid screen	Centrally located drainage grid screen in pre-shrunk PVC fabric joined by high frequency welding
Standard Packaging	Supplied in cardboard box with instructions leaflet

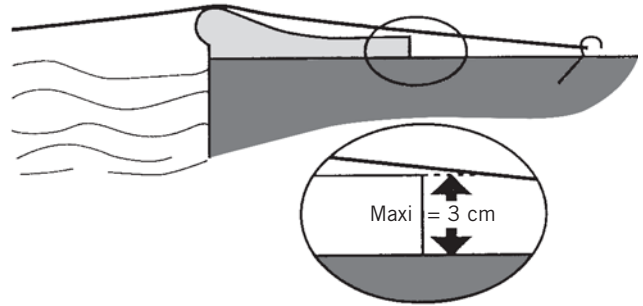
TECHNICAL FEATURES DeLuxe Intersup Covers	
Composition	PVC fabric, reinforced double side 550 g/m <sup>2</sup>
Joints	High frequency welding
Borders	Perimetral hem, bound together by high frequency welding
Fixing	With straps + Dynamometric tensor + S.S. anchoring fixture Distance between straps = approx. 1m Overlapping = 50 cm.
Grid screen	Centrally located grid screen in preshrunk PVC fabric bound together by high fre- quency welding.
Standard Packaging	Supplied in cardboard box in a protec- ted bag and with instructions leaflet

TECHNICAL FEATURES Fixpool Covers	
Composition	PVC fabric, reinforced double side 550 g/m <sup>2</sup>
Joints	High frequency welding
Borders	Perimetral hem, joined by high frequency welding. Rigid PE cable inside the hem
Fixing	By way of Fixkit + S.S. anchoring fixture Distance between them = approx. 80 cm
Grid screen	Centrally located drainage grid screen in pre-shrunk PVC fabric stitched to the cover.
Standard Packaging	Supplied in cardboard box in a protected fbag and with instructions leaflet

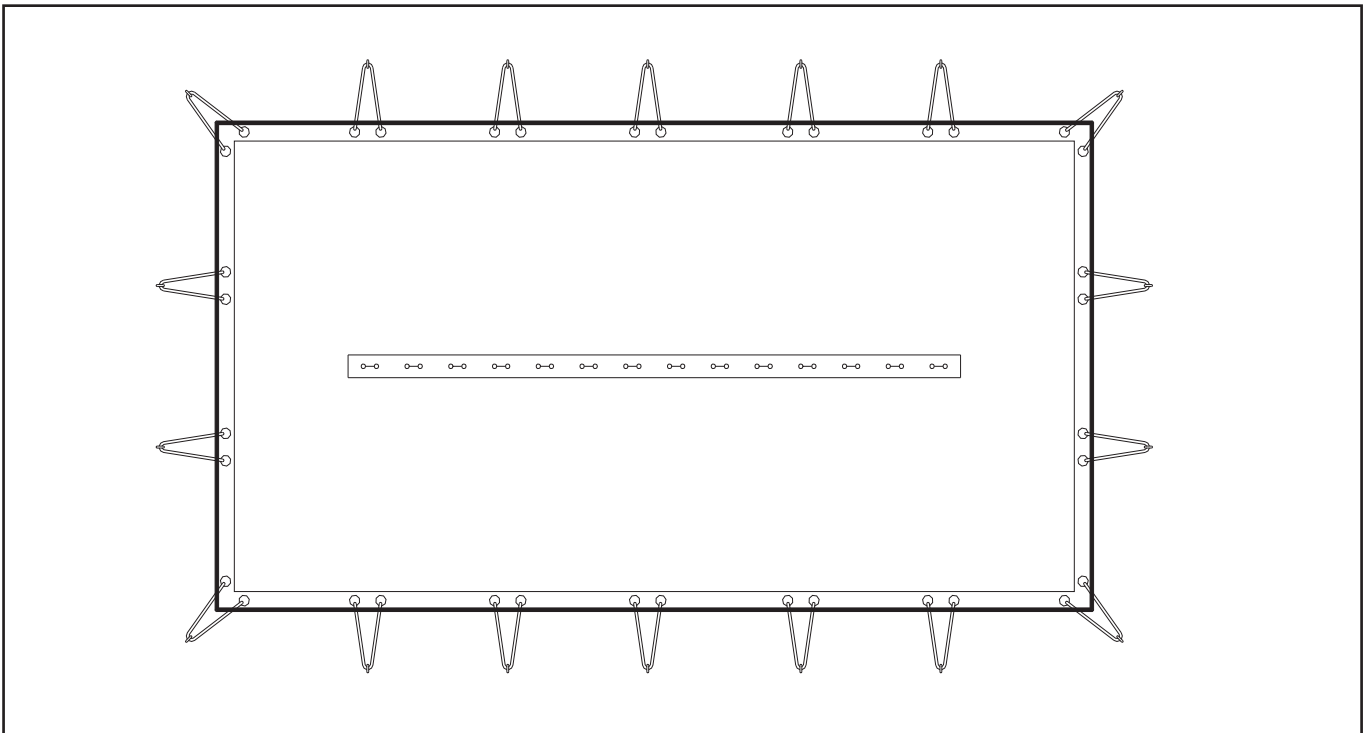
**WINTER COVER INSTALLATION**

**IMPORTANT**

- Each cover is individually designed according to its shape, material and fastening.
- To avoid a premature cover wear and tear rubbing
- Against coping material, the following precautions should be observed when installing it:
- The coping material should not be more than 3 cm thick.
- The cover warranty will not be applicable in case of faulty installation, deficient maintenance or wearing
- Caused by coping elements.



**USING CLIPS OR RUBBER TENSORS**



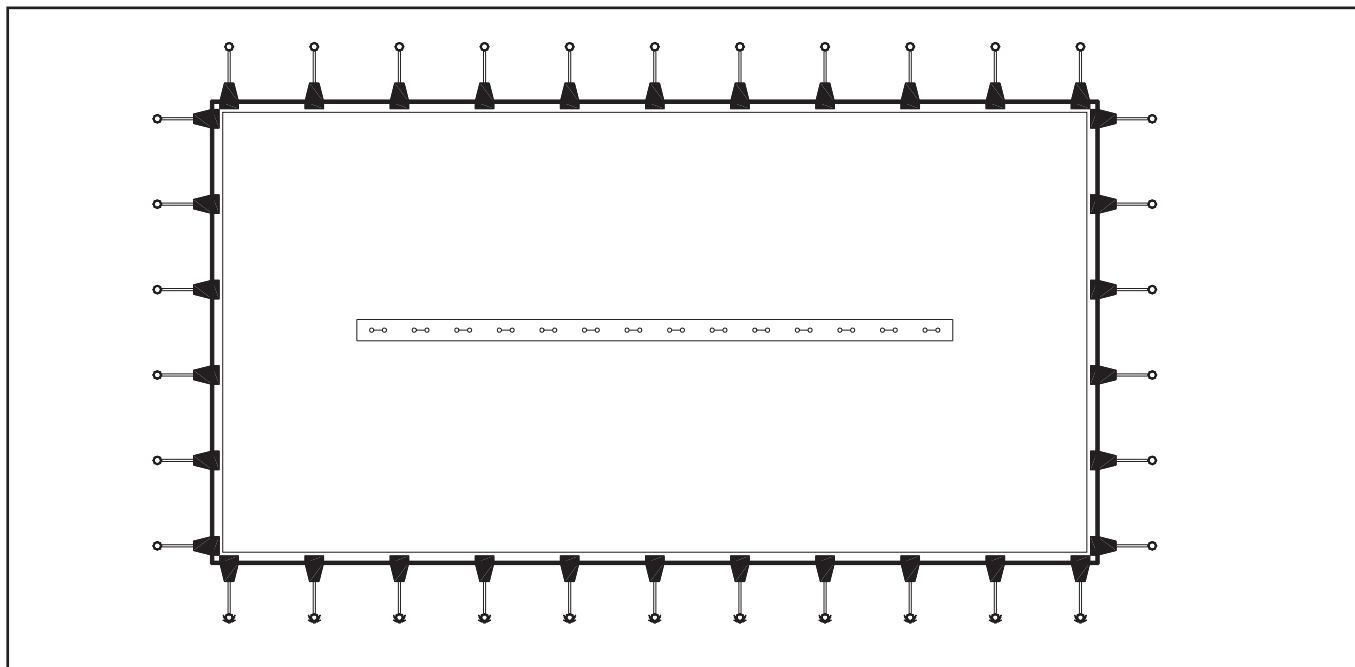
- 1) Make holes in the corners at 40 cm from the coping stone edge.
- 2) Fix the cover at the 4 corners.
- 3) Parallel to each eyelet, drill the other holes at 40 cm from the coping stone edge.
- 4) Tension the cover, leaving a certain allowance to the rubber tensors.

**N.B.:** In very windy regions, we suggest installing double water drains on the side which is most exposed to the wind.



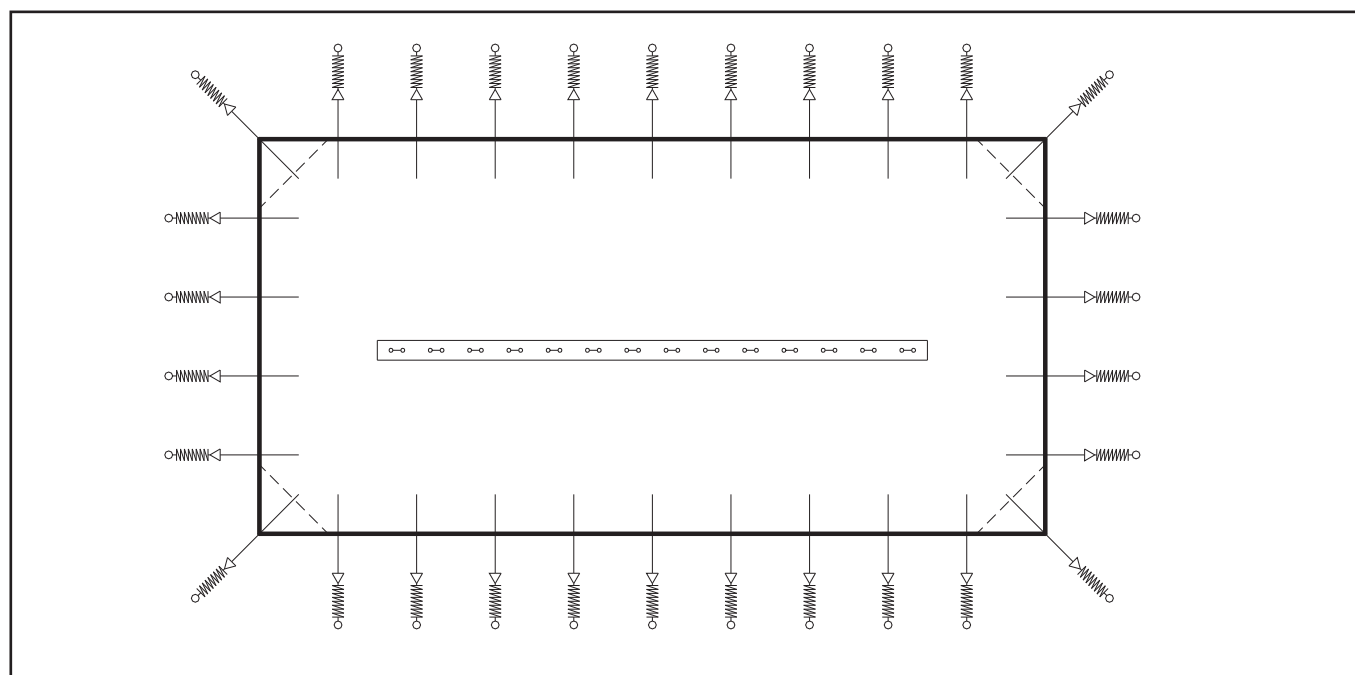
## WINTER COVER INSTALLATION

### WITH FIX KIT



- 1) Drill at the 4 corners at 40 cm from the coping stone edge.
- 2) Fix the cover at the 4 corners.
- 3) Parallel to each eyelet, drill the other holes at 40 cm from the coping stone edge.
- 4) Tense the cover, leaving a certain allowance in the elastic belt tension.

### WITH STRAPS



- 1) Drill at the 4 corners at 40 cm from the coping stone edge.
- 2) Fix the cover at the 4 corners.
- 3) Parallel to each eyelet, drill the other holes at 40 cm from the coping stone edge.
- 4) Tense the cover, leaving a certain allowance in the rubber bands.

**N.B.:** In very windy regions, we suggest installing double water drains on the side which is most exposed to the wind.

**STORAGE ROLLERS FOR COVERS**

**Central pipe in anodised aluminium**



**Ø 100 mm**

- Fixed pipe, length 4.5 m
- Fixed pipe, length 5.5 m
- Fixed pipe, length 6.6 m
- Telescopic pipe, length 4 - 5.5 m
- Telescopic pipe, length 4 - 6.6 m

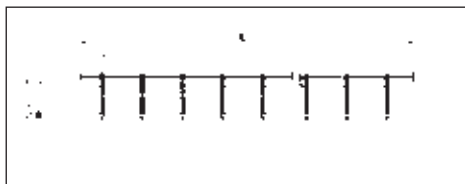
**Ø 80 mm**

- Telescopic pipe, length 4 - 5.5 m
- Telescopic pipe, length 5 - 6.6 m

Code	Standard Packaging	Standard Weight kg.	Standard Volume m <sup>3</sup>
<b>07622</b>	1	12.0	0.059
<b>07623</b>	1	14.3	0.071
<b>07624</b>	1	17.4	0.084
<b>07625</b>	1	12.8	0.054
<b>07626</b>	1	15.5	0.067
<b>24762</b>	1	12.8	0.035
<b>30806</b>	1	15.5	0.043

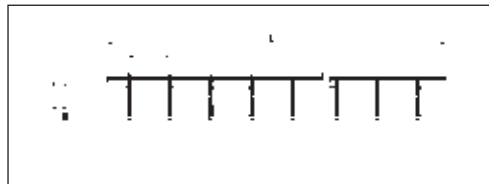
Other lengths, available on request

**Fixed pipe**



Pipe code	L (m)	Ø B (mm)	N° straps
<b>07622</b>	4.5	100	8
<b>07623</b>	5.5	100	8
<b>07624</b>	6.6	100	10

**Telescopic pipe**



Pipe code	L (m)	Ø B (mm)	N° straps
<b>07625</b>	4.0 - 5.5	95/100	8
<b>07626</b>	5.0 - 6.6	95/100	8



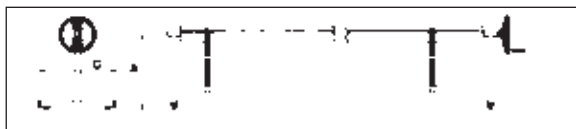
**Stainless Steel fixed end supports**

Set of 2 brackets in "T" shape. Includes steering wheel operation with 8 straps for fixing the cover.

A set of 2 "T" supports in AISI-304

The pipe is not included in the price

Code	Standard Packaging	Standard Weight kg.	Standard Volume m <sup>3</sup>
<b>07631</b>	1	4.8	0.035



Pipe code	A (mm)	C (mm)
<b>07631</b>	500	514

POOL COVERS AND ROLLERS

## STORAGE ROLLERS FOR COVERS

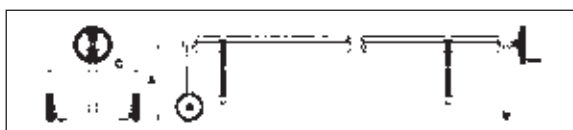
### Stainless Steel mobile support



A set of 2 supports, one "T" end fixed support and the other end support with wheels. Includes 8 straps to tie the cover.

Supports in AISI-304

The pipe is not included in the price.



Code	Standard Packaging	Standard Weight kg.	Standard Volume m <sup>3</sup>
07628	1	7.2	0.035

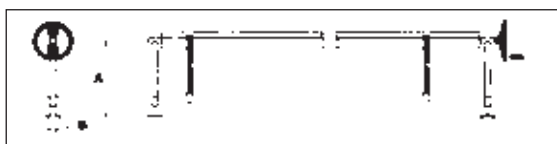
Code	A (mm)	C (mm)
07628	500	650

### Fixed support for roller



Two flange fixing supports with adjustable height from 500-800 mm in AISI-304. Fixed to the floor with flanges. Includes 8 straps for fixing the cover.

The pipe is not included in the price.



Code	Standard Packaging	Standard Weight kg.	Standard Volume m <sup>3</sup>
07629	1	7.2	0.029

Code	A (mm)	B (mm)
07629	500 to 800	100

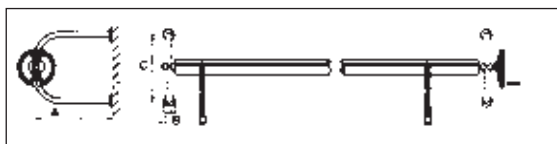
### Wall support for roller



Pair of wall fixing supports. In S.S. AISI-304. Includes 8 straps for fixing the cover.

Set of 2 supports

The pipe is not included in the price.



Code	Standard Packaging	Standard Weight kg.	Standard Volume m <sup>3</sup>
07630	1	6.6	0.087

Code	A (mm)	B (mm)	C (mm)
07630	500	100	500

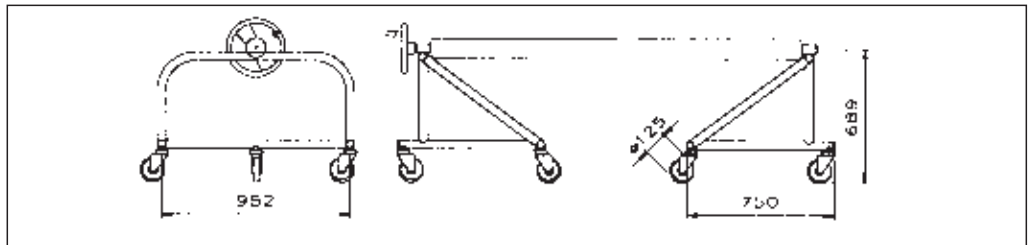
**STORAGE ROLLERS FOR COVERS**

**Roller supports (for larger pools)**



Suitable for fixed roller pipes 07622, 07623 and 07624 or telescopic pipes 07625 and 07626, with 1, 2 or 3 rollers and steering wheels and rotating bar wheel for handling covers. Contains of 2 Stainless Steel AISI-304 structures with wheels (1 set with brakes) to move the roller . Includes 8 straps per roller.

	Code	Standard Packaging	Standard Weight kg.	Standard Volume m <sup>3</sup>
2 mobile supports with 1 roller pipe	<b>15836</b>	1	36.4	0.937
2 mobile supports with 2 roller pipes	<b>15835</b>	1	27.4	1.46
2 mobile supports with 3 roller pipes	<b>15834</b>	1	28.4	1.46



Mobile supports with 1 pipe.



Mobile supports with 2 and 3 roller pipes.

## AUTOMATIC COVERS

### The AstralPool automatic cover

AstralPool is continually incorporating the latest innovations to its products in matters of safety. As such the automatic pool covers have been developed to meet the demands of the French standard NF P90 308, which guarantees maximum user safety.

The AstralPool automatic covers cover the whole pool and are easily rolled up or spread thanks to their in built motorized roller. The turning of a key is all that is needed to get it working.

Manufactured with rigid slats available in various colours, their design and composition provide a floating cover which covers the whole of the water surface and which is very effective as a thermal insulator. To meet the requirements of both existing and new-built swimming pools there are seven models available, the submerged models Roussillon, Conflent and Ceret, the above-ground models Carlit and Vallespir, and the above-ground models with protective casing Capcir and Narbonne.

The submerged automatic cover models Roussillon, Conflent and Ceret allow the cover to be completely integrated into the swimming pool. The mechanical installation is located in a pit annexed to the pool, which is separated by a small concrete or PVC partition.

The above-ground models (Carlit and Vallespir) are the most suitable models for installing in existing pools as the roller is located on the outside of the pool, anchored to the pool surround.

The above-ground models with protective casing (Capcir and Narbonne) are the basic above-ground models which can be complemented with a bench that covers the mechanical installation, giving it a high-quality finish. For installation in existing swimming pools.

### Main advantages

- Increased safety in the swimming pool to protect people and pets from falling accidentally into it. The floating slats cover the entire water surface.\*
- Very convenient to use, the swimming pool is covered and uncovered in silence by simply turning a key.
- Represents a considerable saving:
  - It acts as a thermal barrier preventing heat losses and extending the pool use season.
  - It is a basic complement for pool heating conditioning.
  - It prevents evaporation, therefore it saves water.
  - It reduces algae formation, which results in an important saving in chemical products.
- In indoor pools no condensation is produced in the enclosed hall, thus avoiding deterioration of building materials.
- Lower maintenance costs: reduction of suspended particles.
- The automatic cover enables greater customisation of the swimming pool, increasing its value.

### AstralPool service

- The wide AstralPool commercial network offers immediate service.
- We offer our clients pre- and post-sales technical assessment.
- The manufacturing technical sheet will be used to make a cover which is perfectly adapted to your needs.
- All AstralPool covers undergo strict quality control based on the most demanding regulations.
- Assembly and Civil Engineering Manuals are available to allow building the swimming pool with the ideal requirements for subsequent installation of the submerged cover.

(\*) Our automatic covers comply with the requirements of the French standard NF P90-308 which demands the use of standardized safety mechanisms to prevent the risk of drowning by accidental falls into the pool.

## AUTOMATIC COVERS

### Advice for use and winterizing

**We recommend to follow these basic indications to obtain the optimum performance from the automatic cover:**

- Before operating the cover you must ensure that nobody is in the swimming pool and that there are no objects that could become obstacles to its normal operation.
- Maintaining the correct water level is also important, as a level which is too high or too low can cause blockages at the tie beam, partition or the steps.
- During the retrieving and expanding operations the cover should not be blocked, as this action could be dangerous as well as harmful to the operating mechanism.
- If an automatic pool floor cleaner is used make sure that when the cover is extended neither the hose nor the power supply cable is caught up.
- Regular cleaning of the cover with a pressure cleaning device or with a PVC descaling liquid is recommended. This will also prevent leaves from settling on the cover which could otherwise stain the slats..
- In the case of a hail storm we recommend that you retrieve the cover.
- In the Roussillon submerged model we recommend that you always keep the motor housing dry to prevent the geared motor from getting wet.

**For good winterization, and in order to find the pool in the best conditions in the spring, we recommend to take the following indications:**

- Leave the cover extended over the water surface.
- Keep the water level constant. An excess should be drained through the main drain or the skimmer box.
- It is advisable to clean the trapdoor and the motor housing with a high pressure cleaner before the pool is winterized.
- Place a number of anti-freeze floats in the trapdoor casing, behind the cover. The skimmers should also be protected in the same way.
- We recommend the installation of a plastic type cover to prevent leaves and other substances from obstructing the trapdoor, which should be cleaned regularly.
- In the case of freezing, avoid forcing or pressing down hard on the slats as they could be damaged.
- If the motor is in risk of flooding it is advisable to cut off the power supply and remove the motor.

**PLEASE FILL IN THE FORM PAGES FOR ENQUIRES...**

## AUTOMATIC COVERS: THE SLATS

### The slats

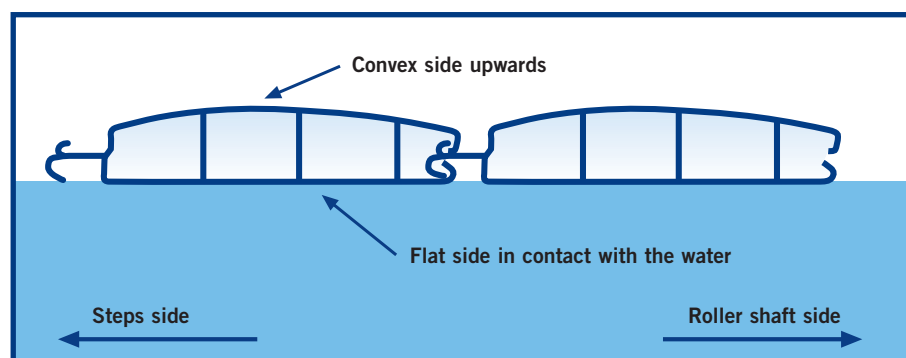
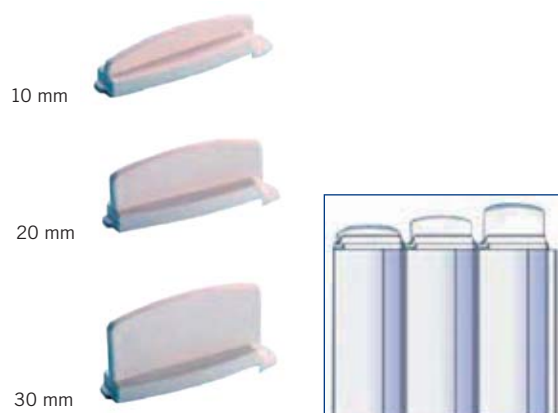
The AstralPool automatic cover uses hollow extrusion PVC watertight slats. The end-caps welded at both ends ensure their floatability. The 20 mm wide cap flaps can assure the total length of the slats. These flaps can also be of 10 or 30 mm, thus altering the total width of the pool cover.

The slats are 71.4 mm wide and 17 mm thick, guaranteeing their floatability. In order to avoid stains, specially organic ones, the slats are coated with calcium-zinc.

In order to best integrate the cover into the environment, you can choose from the different slat models: White, Sand, Opaque Blue, Grey, Translucent Blue\* and solar captor\*. The slats in translucent blue and solar captor can only be used in Northern Europe or in areas where there is less solar radiation.



Pool length	Spool for an aluminium Ø 146 mm shaft (shaft used for pools up to 6 m wide)
1 m	220 mm
2 m	290 mm
3 m	320 mm
4 m	360 mm
5 m	390 mm
6 m	430 mm
7 m	460 mm
8 m	470 mm
9 m	490 mm
10 m	530 mm
11 m	540 mm
12 m	560 mm



WHITE		SAND		BLUE		GREY	
Maximum width.	Code	Maximum width.	Code	Maximum width.	Code	Maximum width.	Code
3.5 ml	34755	3.5 ml	34761	3.5 ml	34758	3.5 ml	40998
4 ml	31168	4 ml	31169	4 ml	31170	4 ml	41000
4.5 ml	34756	4.5 ml	34762	4.5 ml	34759	4.5 ml	41001
5 ml	31172	5 ml	31173	5 ml	31174	5 ml	40761
5.5 ml	34757	5.5 ml	34763	5.5 ml	34760	5.5 ml	41002
6 ml	31176	6 ml	31177	6 ml	31178	6 ml	41003
7 ml	31900	7 ml	31901	7 ml	31902	7 ml	40762
8 ml	31905	8 ml	31906	8 ml	31907	8 ml	41004
9 ml	35132	9 ml	35134	9 ml	35137	-	-
10 ml	35133	10 ml	35135	10 ml	35138	-	-
11 ml	33112	11 ml	35136	11 ml	33343	-	-

\* For use only in Northern Europe. Not recommended for use below 45° latitude. For bigger widths, please enquire. ml = meter length.

**AUTOMATIC COVERS: THE SLATS**

**Step slats**

In order to adapt to any swimming pool shape, 3 different geometric shapes are offered, thus ensuring a perfect fit to the outline of the swimming pool and maximum safety.

The available shapes are Roman steps, Straight steps and Trapezoidal steps.

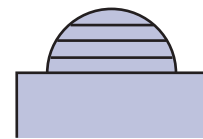
**METHOD TO CALCULATE OF STEPS SLATS**



**ROMAN STEPS**

**Location:**  
It must be located on the side opposite to the cover motor.

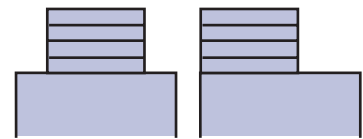
**Step price:**  
Roman step pricelist.



**STRAIGHT STEPS**

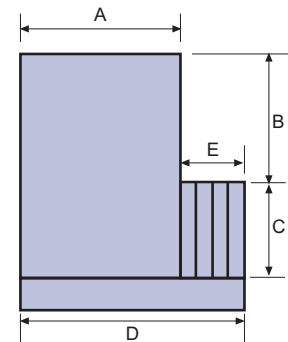
**Location:**  
a) Located in front of the cover motor.

**Step price:**  
Straight step price.



**Location:**  
b) Located next to the cover.

**Step price:**  
Slat pricelist per metre length  $D \times (C + 1 \text{ m})$ .  
• The length of side D includes the width of the pool  $A + E$  (width of steps).

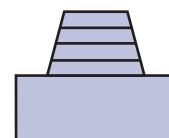


**NOTE FOR SIDE STEPS:**  
Calculation of the total slat price:  
Steps price + slat price  $(A \times B)$

**ISOSCELES TRAPEZOIDAL STEPS**

**Location:**  
Located in front of the cover.

**Step price:**  
Trapezoidal step pricelist.





## AUTOMATIC COVERS: SLATS

### Step slats

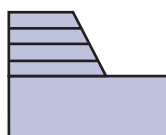
#### RECTANGULAR TRAPEZOIDAL SLATS

**Location:**

a) Located in front of the cover

**Step price:**

Trapezoidal step price.



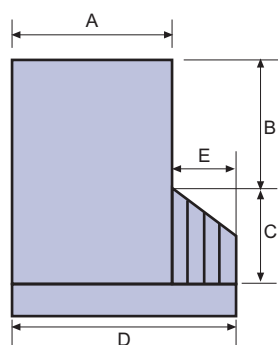
**Location:**

b) Located next to the cover

**Step price:**

Slat price per metre length  
 $D \times (C + 1 \text{ m}) + \text{slat cutting surcharge}$   
 for custom cutting per metre length.

- The length of rollers includes the width of the pool A + the depth of the steps E.



**NOTE FOR LATERAL STEPS:**

Calculation of total slat price: Step price + slat price (A x B)

Description	White	Sand	Opaque Blue	Grey	Blue traslucid*
<b>Square-cut Roman ladder</b>					
Ø 3 m	31182	31183	31184	41043	31185
Ø 4 m	31186	31187	31188	41044	31189
<b>Shape-cut Roman ladder</b>					
Ø 3 m	37094	37188	37190	41045	37192
Ø 4 m	37095	37189	37191	41046	37193
<b>Straight steps</b>					
2 x 1.5 m	31190	31191	31192	41047	31193
2.5 x 2 m	31194	31195	31196	41048	31197
<b>Square-cut Trapezoidal ladder</b>					
3 m base	31198	31199	31200	41049	31201
4 m base	31202	31203	31204	41050	31205
<b>Shape-cut Trapezoidal ladder</b>					
3 m base	37098	37196	37198	41051	37200
4 m base	37099	37197	37199	41052	37201

Two finishing options: Square-cut and Shape cut

\*For use only in Northern Europe. Not recommended for use below 45° latitude. For larger widths, please ask. ml = lineal metres

Code	Step Accessories
31206	Clamp to block steps
31180	Special square cnt for free form
38735	Special free form cnt

**AUTOMATIC COVERS: ACCESSORIES**

**Cover accessories**

We offer a list of accessories for both the use and the maintenance of the automatic cover.



Holding and lifting straps  
Lift-prevention bracket



ABS fixture for wall fixing

Accessories	Code
Lift-prevention bracket, new-built pool with strap fastener. (This model is the one served under express order of another code)	<b>31181</b>
Lift-prevention bracket in ABS for wall fixing + belts	<b>34754</b>
ABS bracket + S.S. support to install under the coping stone + belt	<b>35131</b>
Bracket slat plug - overflow pool	<b>31943</b>
Sky for above-ground cover model	<b>31944</b>



ABS bracket for fixing under the coping stone.



Cover strap fastener



Bracket slat plug



Above-ground cover Sky

In compliance with the French standard NF P90-308 for swimming pool covers the following straps will be supplied according to depending on the kind of cover and the swimming pool:

Submerged models and above-ground models with protective casing:

- Cover with steps: 3 units
- Cover without steps: 2 units

Above-ground models:

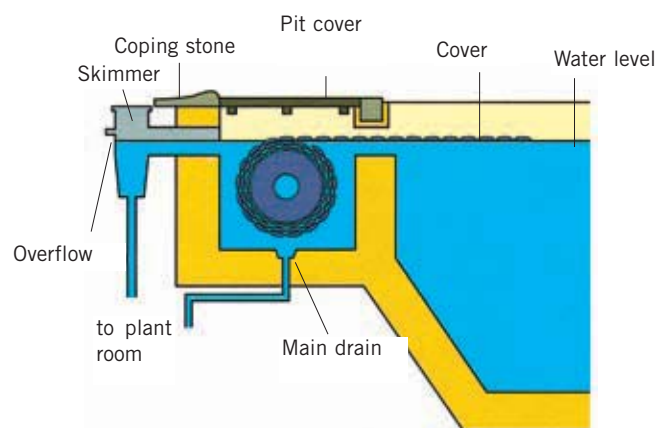
- Cover with steps: 5 units (2 on the motor side and 3 on the steps side)
- Cover without steps: 4 units (2 on the motor side and 2 on the opposite side)

## AUTOMATIC COVERS: SUBMERGED MODELS



### Roussillon submerged model

The Roussillon automatic cover is the submerged model which incorporates the motor in a separate pit, and both the roller shaft as well as the cover are housed at one end inside the pool itself. The submerged pit containing the roller shaft from the main pool should be separated from the main pool by a small concrete partition at the time of construction or with a PVC partition later on. The basic elements for assembling the cover are the slats, the step slats, the mechanical kit, the embedding kit, the aluminium tie beam and the pit cover.



### MECHANICAL KIT

Includes the following elements:

- Ø 146 mm extruded aluminium roller shaft, 5 mm thick and Ø 30 mm connecting shaft.
- Motor supporting bracket.
- Watertight gaskets on the wall conduit side.
- Watertight gaskets on bearing support side.
- 24 V geared motor with stainless steel support bracket.
- 220/24V standard switchboard.
- On-off key switch.

Should be installed in full view of the pool. It operates with the key in the continuous contact position.



Geared motor  
24 V



On-off key switch



220/24V operation  
switchboard



Extruded aluminium shaft

Maximum pool dimensions	Extruded shaft	Reducer motor Nm	Code
4x12 m	5 mm thick Aluminium shaft Ø 146	120 Nm	<b>31144</b>
5x12 m	5 mm thick Aluminium shaft Ø 146	120 Nm	<b>31145</b>
6x12 m	5 mm thick Aluminium shaft Ø 146	250 Nm	<b>31146</b>
7x15 m	3 mm thick Aluminium shaft Ø 168.3	250 Nm	<b>31904</b>
8x15 m	3 mm thick Aluminium shaft Ø 168.3	250 Nm	<b>31909</b>
8x16 m	3 mm thick Aluminium shaft Ø 168.3	600 Nm	<b>31909-006</b>
9x22 m	2 mm thick Aluminium shaft Ø 300	600 Nm	<b>34767</b>
10x22 m	2 mm thick Aluminium shaft Ø 300	600 Nm	<b>34768</b>
11x22 m	2 mm thick Aluminium shaft Ø 300	600 Nm	<b>34769</b>

**AUTOMATIC COVERS: SUBMERGED MODELS**

**Roussillon submerged model**

**COMPLETE ELECTRICAL SWITCHBOARD (optional)**

The 220/24V (120 & 250 Nm) standard electrical switchboard is included in the mechanical kit. Also available is a complete electrical switchboard which includes two spare contactors. One is for stopping salt electrolysis pool treatment when the cover is extended. The second contactor is meant for adapting a pressure cleaning system to the cover.



Electrical switchboard with options	Code
Switchboard operation with two spare contactors	<b>31147</b>

**Note: If a salt chlorinator is used an earthing connection should be installed.**

**EMBEDDING KIT**

Includes the following elements:

- Wall conduit .
- Bearing support bracket for embedding.
- Embeding parts (2) for tie beam support bracket.
- Watertight gaskets for wall conduits



310 mm wall conduit



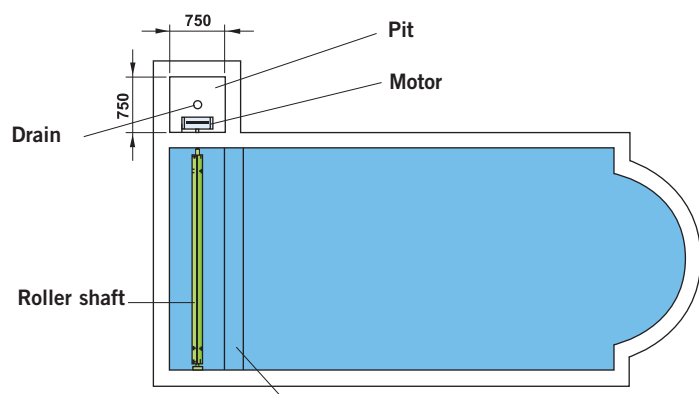
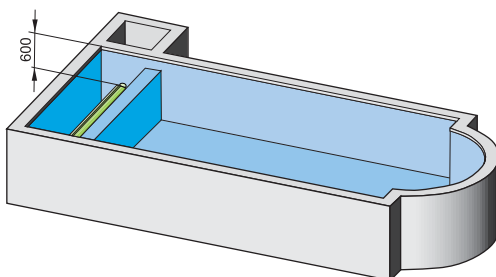
Bearing housing for embedding



Tie beam stand embedding piece

Embedding Kit	Code
Embedding kit with 210 mm conduit	<b>31143</b>
Embedding kit with 310 mm conduit	<b>33074</b>
Embedding kit with 110 mm conduit (special liner and panel pools)	<b>33075</b>

**ROUSSILLON MODEL ASSEMBLY DRAWING**



## AUTOMATIC COVERS: SUBMERGED MODELS

### Submerged model Conflent

The motor is integrated into the interior of the roller shaft and can be installed in existing pools of up to 6 meters wide.

As in the Roussillon model the submerged part containing the roller shaft should be separated by a small concrete partition at the time of construction or later with a PVC partition. The slat colours available for both models are white, beige and opaque blue.

Maxi. pool dimensions	Motor (Nm)	Code
<b>Conflent</b>		
Pool 4 x 12 m	120 (shaft without limit switch)	<b>33069</b>
Pool 4 x 12 m	250 (shaft with limit switch)	<b>33070</b>
Pool 5 x 12 m	120 (shaft without limit switch)	<b>33071</b>
Pool 5 x 12 m	250 (shaft with limit switch)	<b>33072</b>
Pool 6 x 12 m	250 (shaft with limit switch)	<b>33073</b>
Pool 7 x 14 m	250 (shaft with limit switch)	<b>33906</b>



### Submerged model Ceret

The submerged automatic cover Ceret is specially designed for new-built or existing pools of up to 6 metres in width. The motor, placed at water level, is integrated into the roller shaft.

The submerged zone containing the roller shaft can be separated by a small concrete partition at the time of construction or with a PVC partition later on.

The basic elements for cover assembly are the slats, the step slats, the mechanical kit, the embedding kit, the aluminium tie beam and the pit cover.

It has the same technical features as the Roussillon model: easy to install in both existing and new-built pools. It blends in perfect harmony with the pool's surroundings. It is also easy to maintain thanks to the motor location, situated at water level.

The mechanics are made up of:

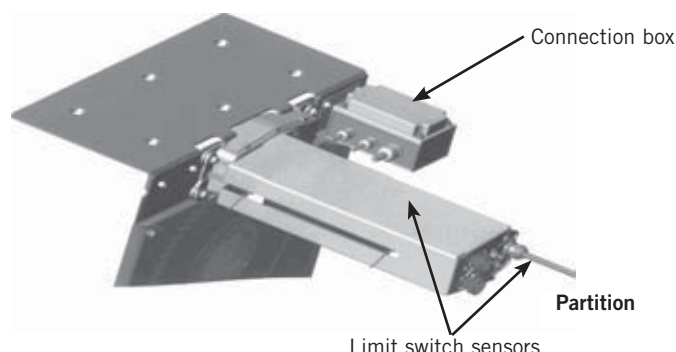
- 150 Nm motor equipped with a limit switch system.
- 2 stainless steel brackets: bearing part and motor part with only the gear transmission.
- A 220 V/24 V power supply unit with a remote key switch.

Max. pool dimensions	Motor	Code
<b>Ceret</b>		
Pool 4 x 12 m	shaft with limit switch	<b>33759</b>
Pool 5 x 12 m	shaft with limit switch	<b>33760</b>
Pool 6 x 12 m	shaft with limit switch	<b>33761</b>

WATER LEVEL NEEDED: 120 mm from the pool border.



Stainless Steel bracket



**AUTOMATIC COVERS: SUBMERGED MODELS**



**Ceret roller with solar heating feature**

It is suitable to cover swimming pools up to 6 x 12 meters with ladder and floating slats cover.

Max. pool dimensions	Code
Pool 4 x 12 m	<b>45770</b>
Pool 5 x 12 m	<b>45771</b>
Pool 6 x 12 m	<b>45772</b>

**Submerged models: Price calculation**

**CALCULATING THE PRICE**

- A.- Calculate the required length of the cover adding 1 metre to the useful length of the pool. Determine the price of the slats according to the price per lineal metre corresponding to the maximum width of the pool.
- B.- To calculate the total price add up the following:
  - Price of the slats.\*
  - Price of the step slats.\*
  - Price of the embedding kit, (only Roussillon model).
  - Price of the mechanical fixture kit (bearing in mind the maximum width of the pool).
  - Price of the tie beam (bearing in mind the required length).
  - Price of pit covers (bearing in mind the material and the size of the pit).
  - Cover strap fasteners, plus lift-prevention brackets.
- C.- Available options to be added to the above total cost:
  - Complete electrical switchboard.
  - Te beams and slats accessories.
  - PVC partition.
- Spare parts for the embedding kit and the tie beam.

\*For pools with straight or lateral trapezoidal steps see pages 397 and 398.

**Submerged models: Accessories**

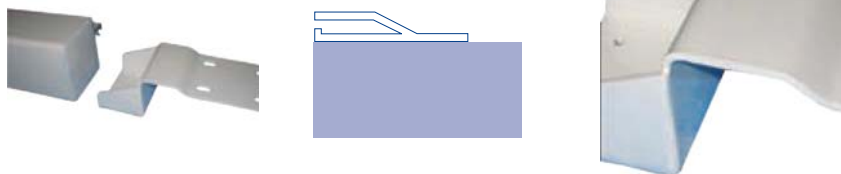
**THE TIE BEAM**

Its function is to provide support to the pit cover. Manufactured in white coated aluminium, it measures 100 x 110 mm and weighs 9 kg/ml.

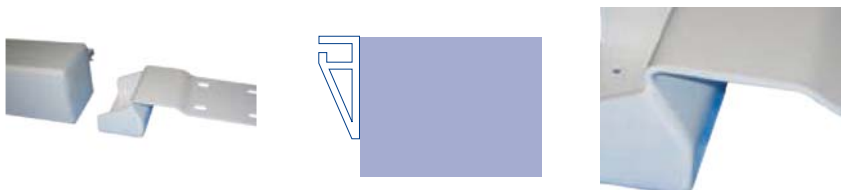
This tie beam is delivered with coated stainless steel support bracket and stainless steel nuts and bolt

**Note: The anti-flex support bracket is essential for more than 6 m.**

**Tie beam stand for liner horizontal profile**



**Tie beam stand for liner vertical profile**



Lacquered Aluminium tie beam

POOL COVERS AND ROLLERS

## AUTOMATIC COVERS: SUBMERGED MODELS

### Submerged models: Accessories

#### THE TIE BEAM



The beam standard bracket



The beam stand for liner holding vertical profile



The beam support bracket for fastening to the pool wall



The beam adjustable bracket

Beam length	Code
<b>White beam + Standard bracket</b>	
UP TO 4 meters	31148
From 4 m to 5 m	31149
From 5 m to 6 m	31150
From 6 m to 7 m	31911
From 7 m to 8 m	31912
<b>Sand beam + Standard bracket</b>	
UP TO 4 meters	38529
From 4 m to 5 m	38530
From 5 m to 6 m	38531
From 6 m to 7 m	38532
From 7 m to 8 m	38533
<b>White beam + Stand for liner holding vertical profiler</b>	
UP TO 4 meters	33870
From 4 m to 5 m	33871
From 5 m to 6 m	33872
From 6 m to 7 m	33873
From 7 m to 8 m	33886
<b>Sand beam + Stand for liner holding vertical profile</b>	
UP TO 4 meters	38534
From 4 m to 5 m	38535
From 5 m to 6 m	38536
From 6 m to 7 m	38537
From 7 m to 8 m	38538
<b>White beam + Support bracket for fastening to the pool wall</b>	
UP TO 4 meters	33874
From 4 m to 5 m	33875
From 5 m to 6 m	33876
<b>Sand beam + Support bracket for fastening to the pool wall</b>	
UP TO 4 meters	38534
From 4 m to 5 m	38535
From 5 m to 6 m	38536
<b>White beam + Adjustable bracket</b>	
UP TO 4 meters	35717
From 4 m to 5 m	35718
From 5 m to 6 m	35719
From 6 m to 7 m	35720
From 7 m to 8 m	35721
<b>Sand beam + Adjustable bracket</b>	
UP TO 4 meters	38539
From 4 m to 5 m	38540
From 5 m to 6 m	38541
From 6 m to 7 m	38542
From 7 m to 8 m	38543

#### TIE BEAM ACCESSORIES



Anti-flex stand

Tie beam accessories	Code
Anti-flex stand for 700 mm pit covers and beams of more than 6 m	31920
Anti-flex stand for 950 mm pit covers and beams of more than 6 m	31913



**AUTOMATIC COVERS: SUBMERGED MODELS**

**Submerged models: Accessories**

**THE PIT COVER**

The pit cover protects the automatic cover operating unit and conveys an aesthetic improvement to the surroundings. It is available in IPE wood, or in white aluminium.

**New** Pit cover composite available in two colors: Grey and wood colours. Composite material is fully adhered, even when wet, and it has a hardness equivalent to the hardest solid woods. As a material insensitive to climate change, durability and resistance are one.

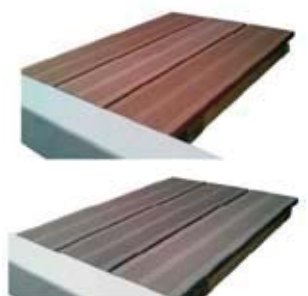
For pools with a partition wall the cover will be 950 mm wide, while for pools with a PVC partition the 700 mm lid will be used.



Pit cover of IPE wood



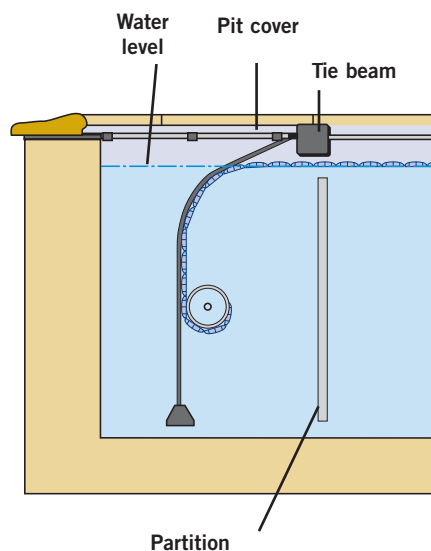
Pit cover of white aluminium



Pit cover of composite

The pit cover	Code
IPE wood 1.00 x 0.70 m	<b>31152</b>
IPE wood 1.00 x 0.95 m	<b>31153</b>
IPE wood made to measure, m <sup>2</sup>	<b>31154</b>
White aluminium 1.00 x 0.70 m	<b>33679</b>
White aluminium 1.00 x 0.95 m	<b>33680</b>
White aluminium made to measure, m <sup>2</sup>	<b>33681</b>
Sand aluminium 1.00 x 0.70 m	<b>38512</b>
Sand aluminium 1.00 x 0.950 m	<b>38513</b>
Sand aluminium made to measure, m <sup>2</sup>	<b>38514</b>
Composite wood colour 1.00 x 0.70 m	<b>53864</b>
Composite wood colour 1.00 x 0.95 m	<b>53865</b>
Composite grey colour 1.00 x 0.70 m	<b>53866</b>
Composite grey colour 1.00 x 0.95 m	<b>53867</b>

**New**



**PVC PARTITION**

The partition can be made of concrete or PVC. It is designed to improve safety by preventing bathers from coming into contact with the roller shaft. It also prevents the pool-floor cleaning hose from being rolled up into the slats.

The partition is made up of 300 mm high PVC panels, internally reinforced with stainless steel. It is fastened with two white coated stainless steel U clamps, which are fastened to the tie beam support bracket.

Will be fastened to vertical walls

For pools of more than 6 m width ask your AstralPool branch.





## AUTOMATIC COVERS: SUBMERGED MODELS

### Submerged models: Accessories



Partition panel with stainless steel reinforcement



900 mm high U clamp



1200/1500 mm high U clamp

Partitions	Code
PVC partition + Stainless Steel 900 mm x 4 m	31158
PVC partition + Stainless Steel 900 mm x 5 m	31159
PVC partition + Stainless Steel 900 mm x 6 m	31160
PVC partition + Stainless Steel 1200 mm x 4 m	31161
PVC partition + Stainless Steel 1200 mm x 5 m	31162
PVC partition + Stainless Steel 1200 mm x 6 m	31163
PVC partition + Stainless Steel 1500 mm x 4 m	33077
PVC partition + Stainless Steel 1500 mm x 5 m	33078
PVC partition + Stainless Steel 1500 mm x 6 m	33079
Partition Sand colour + Stainless Steel 900 mm x 4 m	38515
Partition Sand colour + Stainless Steel 900 mm x 5 m	38516
Partition Sand colour + Stainless Steel 900 mm x 6 m	38517
Partition Sand colour + Stainless Steel 1200 mm x 4 m	38518
Partition Sand colour + Stainless Steel 1200 mm x 5 m	38519
Partition Sand colour + Stainless Steel 1200 mm x 6 m	38520
Partition Sand colour + Stainless Steel 1500 mm x 4 m	38521
Partition Sand colour + Stainless Steel 1500 mm x 5 m	38522
Partition Sand colour + Stainless Steel 1500 mm x 6 m	38523
Stainless Steel U clamps H 900 mm on beam bracket	31164
Stainless Steel U clamps H 900 mm for fastening on the wall	33083
Stainless Steel U clamps H 1200 mm for fastening on the wall	31165
Stainless Steel U clamps H 1500 mm for fastening on the wall	33084
S.S. U clamps colour Sand H 900 mm for fastening on the wall	38736
S.S. U clamps colour Sand H 1200 mm for fastening on the wall	38737
S.S. U clamps colour Sand H 1500 mm for fastening on the wall	38738
S.S. U clamps colour White H 1200 mm on beam bracket	38549
S.S. U clamps colour White H 1500 mm on beam bracket	38550
S.S. U clamps colour Sand H 900 mm on beam bracket	38551
S.S. U clamps colour Sand H 1200 mm on beam bracket	38552
S.S. U clamps colour Sand H 1500 mm on beam bracket	38553

Tie beam and embedding kit spare parts	Code
210 mm wall conduit	31207
310 mm wall conduit	33076
110 mm wall conduit for liner pool	31211
Pre-embeddings (2) tie beam support bracket	31208
Bearing support for embedding	31209
2x tie beam brackets	31910
2x tie beam stands liner vertical profile	31210
2x tie beam stands for fastening to pool wall with wall plugs	32645

**AUTOMATIC COVERS: ABOVE-GROUND MODELS**

**N-Carlit above ground model**

New



Automatic above-ground cover perfect for existing pools with limit switch up to:

- 3 x 18 m + stairs
- 4 x 17 m + stairs
- 5 x 17 m + stairs
- 6 x 16 m + stairs
- 7 x 14 m + stairs

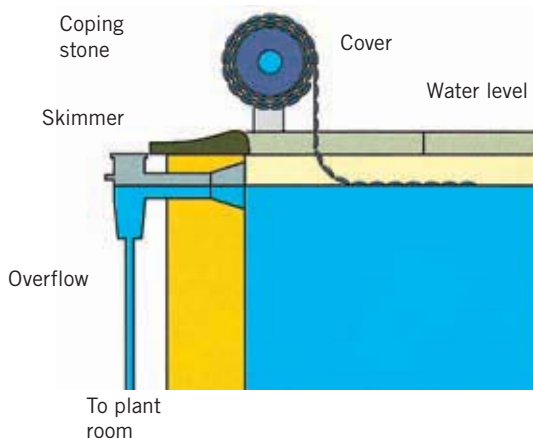
Note that as it is an above-ground model cover, the storage rollers must be placed out of the pool, fixed to the floor.

**MECHANICAL KIT:**

Consists of:

- Two white or sand colour coated stainless steel stands
- Ø 146 mm anodised aluminium roller shaft.
- 24V tubular motor with limit switch adjustment, or 12 volts depending on the pool width.
- Key switch with self return to 0 point
- Switchboard with 220/24V transformer.

	Colour white / black	Colour white / white
Mechanical kit up to 3.03 x 12 meters	54136	54146
Mechanical kit up to 3.03 x 17 meters	54137	54147
Mechanical kit up to 4.03 x 12 meters	54136	54146
Mechanical kit up to 4.03 x 16 meters	54137	54147
Mechanical kit up to 4.03 x 17 meters	54141	54151
Mechanical kit up to 5.03 x 12 meters	54138	54148
Mechanical kit up to 5.03 x 13 meters	54139	54149
Mechanical kit up to 5.03 x 17 meters	54142	54152
Mechanical kit up to 6.03 x 17 meters	54140	54150
Mechanical kit up to 7.03 x 14 meters	54145	54155



POOL COVERS AND ROLLERS

## AUTOMATIC COVERS: ABOVE-GROUND MODELS



### N-Carlit Eco above ground model

New

Automatic above-ground cover perfect for existing pools without limit switch up to:  
- 5 x 10 m + stairs

	Colour white / black	Colour white / white
Mechanical kit up to 3.03 x 10 meters	54132	54134
Mechanical kit up to 4.03 x 10 meters	54132	54134
Mechanical kit up to 5.03 x 10 meters	54133	54135



### N-Carlit Manual above ground model

New

Manual roller that can cover pools up to 5 x 10 m using floating slats.

Consist of:

- Two white or sand color coated stainless steel stands.
- One Roller shaft.
- One integrated reducing gear to facilitate the cover roll up.
- One crank.

Optional: kit to automate the equipment by electric motor.

	Colour white / black	Colour white / white
Mechanical kit up to 3.03 x 10 meters	54128	54130
Mechanical kit up to 4.03 x 10 meters	54128	54130
Mechanical kit up to 5.03 x 10 meters	54129	54131

**AUTOMATIC COVERS: ABOVE-GROUND MODELS**



**Above-ground: Price calculation**

**CALCULATING THE PRICE**

- A.- Calculate the total length of slats according to the water surface length of the pool. Calculate the price of the slats according to the price per m and the pool's maximum width.
- B.- To calculate the total price add up the following aspects:
  - Price of the slats.\*
  - Price of the step slats.\*
  - Price of the mechanical kit (taking into consideration the pool's maximum width).
  - Cover strap fasteners.
- C.- Available options to be added to the above total cost:
  - Slat accessories

\*For pools with straight or lateral trapezoidal steps check pages 397 and 398.



**Carlit Solar Pool cover**

The automatic solar pool cover Carlit runs on solar energy, making it a very environmentally-friendly product. It reduces water evaporation and heat loss in your pool. The cover also minimises premature evaporation of pool chemicals. Certified by the French standard NF 90-308, the Carlit solar pool cover guarantees higher quality, reducing possible accidents arising from children, animals, or objects falling into the water.

**Precautions for installation: THE SUN MUST DIRECTLY COME INTO CONTACT WITH THE PHOTOVOLTAIC PLATE. DO NOT INSTALL UNDER A TREE OR FACING NORTH.**

**Main advantages:**

- Easy to install, no cabling required (solar powered).
- 40-cycle independence: once the battery is fully charged, in the absence of further light the cover can be extended and retracted 40 times.
- Easy to use cover with low maintenance costs.

**General features:**

- It allows pools up to 6 x 12 m with step area to be fully covered
- Geared motor powered by solar energy. One of the supports features a photovoltaic cell.
- Tubular 150 Nm 12 v. geared motor. Anodised aluminium pipe.
- Limit switch memory system.
- 3 different slat and end piece colours are available: white, sand and blue.
- Two 12 volt battery.



Mechanical pool cover coding	Code
Mechanical kit up to 4 m (up to 4 x 12 m)	<b>35917</b>
Mechanical kit up to 5 m (up to 5 x 12 m)	<b>35918</b>
Mechanical kit up to 6 m (up to 6 x 12 m)	<b>35919</b>



POOL COVERS AND ROLLERS

## AUTOMATIC COVERS: ABOVE-GROUND MODELS



### Above-ground: Vallespir model

Motor located at the foot of the roller shaft. Ideal for existing pools of up to 7.5 metres in width. It is composed of:

Two white coated aluminium stands, RAL 9016, with fixing plates prepared for fastening to the coping stone, equipped with two white polyester covers.

Roller shaft in anodised aluminium for pools of up to 5 m and 24 V 120 Nm geared motor with limit switch. 168 mm diameter stainless steel roller shaft for pools of more than 6 m in width, 24 V 120 Nm geared motor with limit switch.

220/24 V Electrical power control cabinet.

Remote control switch, in full view of the pool, with 3 fixed positions according to the French standard NF P90-308.



Maxi. pool dimensions	Motor (Nm)	Code
<b>Vallespir</b>		
Pool 4 x 12 m	120	<b>33087</b>
Pool 5 x 12 m	120	<b>33088</b>
Pool 6 x 12 m	250	<b>33089</b>
Pool 7.5 x 15 m	250	<b>33090</b>

## AUTOMATIC COVERS: ABOVE-GROUND MODELS WITH PROTECTIVE CASING



### Above-ground models with protective casing: Capcir and Narbonne

Easy to install and to start operating, ideal for installing in existing pools. They incorporate protective casing for the cover's operating mechanical unit, providing greater safety and improving the design. It is ideal for pools of up to 6 metres in width.

On the **Capcir** model the motor is located in one side of the roller shaft, integrating perfectly with the cover casing. It ensures easy handling of the motor in the case of breakdowns or servicing. The panel-protected casing is available in white PVC or IPE wood. **CAUTION: DO NOT SIT ON IT NOR USE IT TO DIVE.**

Its main elements are a Ø 146 mm anodised aluminium roller shaft, a geared motor of 120 Nm or 250 Nmotor, an electric cabinet and a 3-position key switch in accordance with the French standard NF P90-308.

In the Narbonne model the motor is located inside the roller pipe itself in such a way that it is completely blended into the pool surroundings. The casing is protected by wood PVC or IPE timber.

Its main elements are a 12V, 150 Nm tubular motor with limit switch, a key switch with automatic return incorporated in the Istand cover and a switchboard with a transformer.



Maxi. pool dimensions	Motor (Nm)	Code		Code		Code		Code
		White PVC casing		Sand PVC casing		PVC wood colour casing		
Protective casing		non-dismountable	dismountable	non-dismountable	dismountable	non-dismountable	dismountable	Code
<b>Capcir</b>								
Pool 4 x 12 m	120	<b>31947</b>	-	-	-	-	-	<b>31951</b>
Pool 5 x 12 m	120	<b>31948</b>	-	-	-	-	-	<b>31952</b>
Pool 6 x 14 m	250	<b>31949</b>	-	-	-	-	-	<b>31953</b>
<b>Narbonne</b>								
Pool 4 x 12 m	150	<b>33432</b>	<b>41061</b>	<b>41056</b>	<b>41059</b>	<b>37139</b>	<b>41063</b>	<b>37109</b>
Pool 5 x 12 m	150	<b>33433</b>	<b>41062</b>	<b>41057</b>	<b>41060</b>	<b>37140</b>	<b>41064</b>	<b>37110</b>
Pool 6 x 12 m	150	<b>37112</b>	-	<b>41058</b>	-	<b>37141</b>	-	<b>37111</b>

**AUTOMATIC COVERS: ABOVE-GROUND MODELS WITH PROTECTIVE CASING**

**Above-ground models with protective casing: Solar Narbonne**



The automatic solar cover works with solar energy and stands out as it is highly environmental. Keeps water from evaporating and reduces the loss of heat in the pool. On the other hand, it minimizes early evaporation of chemical products. Certified by the French NF 90-308 standard, the solar cover guarantees higher quality, reducing possible accidents due to children, animals, other objects falling into the pool... **PRECAUTIONS FOR USE: DO NOT SIT DOWN ON IT OR USE IT TO DIVE. Precautions for installation: THE SUN MUST DIRECTLY COME INTO CONTACT WITH THE PHOTOVOLTAIC PLATE. DO NOT INSTALL UNDER A TREE OR FACING NORTH.**

**Main advantages:**

- Easy to install, no cabling required (solar powered).
- 40-cycle independence: once the battery is fully charged, in the absence of further light the cover can be extended and retracted 40 times.
- **Easy to use cover with low maintenance costs.**



**General features:**

- Covers pools of up to 6 x 12 with stairs
- Roller powered by solar energy
- Two 12 volt batteries
- Limit switch memory system
- 3 types of casings possible: PVC, wood coloured PVC and timber Access to the motor through the base of the casing
- 150 Nm 12 volt motor.
- Possibility to ask for a dismountable casing to have access to slats
- Access to the motor without touching the slat casing.
- The casing is protected with PVC, wood coloured PVC or IPE timber sheets.

Maxi. pool dimensions	Motor (Nm)	White PVC casing		Sand PVC casing		PVC wood casing		IPE casing
		non-dismountable	dismountable	non-dismountable	dismountable	non-dismountable	dismountable	
<b>Narbonne Solar</b>								
Pool 4 x 9 m	150	<b>37561</b>	<b>41068</b>	<b>41065</b>	<b>41070</b>	<b>37564</b>	<b>41072</b>	<b>37567</b>
Pool 5 x 12 m	150	<b>37562</b>	<b>41069</b>	<b>41066</b>	<b>41071</b>	<b>37565</b>	<b>41073</b>	<b>37568</b>
Pool 6 x 12 m	150	<b>37563</b>	-	<b>41067</b>	-	<b>37566</b>	-	<b>37569</b>

## AUTOMATIC COVERS: COMMERCIAL AND MUNICIPAL MODELS

### Commercial roller model Borna



This shaft is aimed to install on commercial indoor or outdoor swimming pools of 12.5 x 25 meters maximum. It can be used for bubble or reinforced polyethylene foam covers. The distance between the roller shaft and the pool edges must be reduced as much as possible to prevent abnormal wear and tear due to the friction on the coping.

#### Technical features:

- 24 V 250 Nm motor
- 300 mm stainless steel shaft
- Thermoplastic bearings fitted with stainless steel bearing
- Motor protection cover in thermoformed ABS.
- Remote control + key

Mechanical kit Code	Code
Mechanical kit up to 12.5 m (max. 12.5 x 25 m)	<b>38734</b>



### Municipal model Double

Suitable to cover municipal swimming pools up to 15 x 25 m with bubble or polyethylene based foam cover. Technical characteristics: 2 tubular motors of 120Nm and 24V. 2 aluminium shafts. 6 wheels. Remote control + key. Description: 6,03 x 25 m.

	Code	Standard Packaging	Standard Weight kg.	Standard <sup>d</sup> Volume m <sup>3</sup>
Width ≤6,03m Length ≤ 25m	<b>41441</b>	-	-	-
Width ≤8,03m Length ≤ 25m	<b>41442</b>	-	-	-



### Municipal model Aerial

Suitable to cover municipal swimming pools up to 12.5 x 25 m with bubble or polyethylene based foam cover. Technical characteristics: 150 x 150 mm white coated aluminium supports. Stainless steel shaft. Motor 250 Nm, 12V. Remote control + key.

	Code	Standard Packaging	Standard Weight kg.	Standard <sup>d</sup> Volume m <sup>3</sup>
Width ≤12,53m Length ≤ 25m	<b>41810</b>	-	-	-

### Above-ground models with protective casing: price calculation

#### CALCULATING THE PRICE

**A.-** Calculate the total length of slats required according to the water surface length of the pool. Determine the price of the slats according to the price per m as per the maximum width of the pool.

**B.-** To calculate the total price add up the following aspects:

- Price of the slats.\*
- Price of the step slats.\*
- Price of the mechanical kit (bearing in mind the maximum pool width).
- Cover strap fasteners plus lift-prevention brackets..

**C.-** Available options to be added to the above total cost:

- Slat accessories.

\*For pools with straight or lateral trapezoidal steps consult pages 397 and 398.



**AUTOMATIC COVERS: DISPLAY MODELS**

**Carlit display model (without motor)**

Width: 1.5 metres with blue, white and sand colour slats.



Code	Standard Packaging	Standard Weight kg.	Standard <sup>d</sup> Volume m <sup>3</sup>
33764	1	-	-

**Carlit Solar display model ( without motor )**

Width: 1.5 m. With blue, white and sand colour slats.



Code	Standard Packaging	Standard Weight kg.	Standard <sup>d</sup> Volume m <sup>3</sup>
38740	1	-	-

**Capcir display model (without motor)**

Width: 1.5 m. Casing half IPE timber and half PVC.



Code	Standard Packaging	Standard Weight kg.	Standard <sup>d</sup> Volume m <sup>3</sup>
33765	1	-	-

**Narbonne Solar display model (without motor)**

Width: 1.5 m. Timber + PVC slats.



Code	Standard Packaging	Standard Weight kg.	Standard <sup>d</sup> Volume m <sup>3</sup>
38821	1	-	-



## TELESCOPIC COVERS

Telescopic cover system for KIT pools. Very easy assembly, even for the end user. The tools necessary for the complete assembly are included with each cover. Structure and guide surface finish, paint or elox. Structure manufactured with high quality AlMgSi aluminium. Meets NF P 90-309 standard:

- Resistant to 100 to 120 km/h winds
- Resists more than 80 kg of weight per m<sup>2</sup>



### Klasik

Telescopic cover klasik model with structure and guide surface elox finish. Three support profiles per module. Movable front walls made of polycarbonate. Hinged door. Distance of the guides between shafts 70 mm. 35 x 50 mm profiles. Single celled, limp, cellular 8 mm polycarbonate with UV protection. Heat transmission coefficient (K = 3.1 kW m<sup>2</sup> on the ceiling and K= 5.4 kWm<sup>2</sup> on the walls) no DROP treatment.

	Code	Standard Packaging	Standard Weight kg.	Standard Volume m <sup>3</sup>
A Klasik model – Elox colour	<b>36822</b>	1	-	-
B Klasik model – Elox colour	<b>36823</b>	1	-	-
C Klasik model – Elox colour	<b>36824</b>	1	-	-

Model	Max. pool dimensions	Outside width	Length	Height
<b>A</b>	315 x 633 cm	360 cm	641 cm	105 cm
<b>B</b>	411 x 844 cm	470 cm	852 cm	155 cm
<b>C</b>	497 x 1055 cm	570 cm	1063 cm	185 cm



### Casablanca

Structure and guide surface finish in white or pine colour. 73.5 x 50 mm profiles. Elox guides. Door on the rear wall. Fixed front door. Side door 2 on the larger module, child security lock with key. Transparent glass walls and sides. Single celled, limp, cellular 8 mm polycarbonate with UV protection. Heat transmission coefficient (K = 3.3 kW/3) no DROP treatment.

	Code	Standard Packaging	Standard Weight kg.	Standard Volume m <sup>3</sup>
A Casablanca model – white colour	<b>36825BL</b>	1	-	-
B Casablanca model – white colour	<b>36826BL</b>	1	-	-
C Casablanca model – white colour	<b>36827BL</b>	1	-	-
A Casablanca model – wood colour	<b>36825PI</b>	1	-	-
B Casablanca model – wood colour	<b>36826PI</b>	1	-	-
C Casablanca model – wood colour	<b>36827PI</b>	1	-	-

Model	Max. pool dimensions	Outside width	Length	Height
<b>A</b>	517 x 948 cm	578 cm	970 cm	263 cm
<b>B</b>	595 x 1264 cm	678 cm	1286 cm	283 cm
<b>C</b>	595 x 1580 cm	700 cm	1603 cm	294 cm



### Klasik No-Line

Compact dimensions. Lateral, front and rear doors in PLEXI GLASS with 5.5 Kwm<sup>2</sup> heat transmission. One of the major advantages incorporated in these models is the non-rail movement. 60 x 60 mm profiles. White coated structure surface finish. Roof manufactured in single celled, limp, cellular 8 mm polycarbonate with UV protection. Heat transmission coefficient (K = 3.3 kW/m<sup>2</sup>) no DROP treatment.

	Code	Standard Packaging	Standard Weight kg.	Standard Volume m <sup>3</sup>
Klasik No-Line A white coated	<b>38732</b>	1	-	-
Klasik No-Line B white coated	<b>38733</b>	1	-	-

Model	Max. pool dimensions	Outside width	Length	Height
<b>A</b>	468 x 1045 cm	590 cm	1046 cm	130 cm
<b>B</b>	567 x 1250 cm	715 cm	1254 cm	150 cm

Алматы (7273)495-231  
 Ангарск (3955)60-70-56  
 Архангельск (8182)63-90-72  
 Астрахань (8512)99-46-04  
 Барнаул (3852)73-04-60  
 Белгород (4722)40-23-64  
 Благовещенск (4162)22-76-07  
 Брянск (4832)59-03-52  
 Владивосток (423)249-28-31  
 Владикавказ (8672)28-90-48  
 Владимир (4922)49-43-18  
 Волгоград (844)278-03-48  
 Вологда (8172)26-41-59  
 Воронеж (473)204-51-73  
 Екатеринбург (343)384-55-89

Иваново (4932)77-34-06  
 Ижевск (3412)26-03-58  
 Иркутск (395)279-98-46  
 Казань (843)206-01-48  
 Калининград (4012)72-03-81  
 Калуга (4842)92-23-67  
 Кемерово (3842)65-04-62  
 Киров (8332)68-02-04  
 Коломна (4966)23-41-49  
 Кострома (4942)77-07-48  
 Краснодар (861)203-40-90  
 Красноярск (391)204-63-61  
 Курск (4712)77-13-04  
 Курган (352)50-90-47  
 Липецк (4742)52-20-81

Магнитогорск (3519)55-03-13  
 Москва (495)268-04-70  
 Мурманск (8152)59-64-93  
 Набережные Челны (8552)20-53-41  
 Нижний Новгород (831)429-08-12  
 Новокузнецк (3843)20-46-81  
 Ноябрьск (3496)41-32-12  
 Новосибирск (383)227-86-73  
 Омск (3812)21-46-40  
 Орел (4862)44-53-42  
 Оренбург (3532)37-68-04  
 Пенза (8412)22-31-16  
 Петрозаводск (8142)55-98-37  
 Псков (8112)59-10-37  
 Пермь (342)205-81-47

Ростов-на-Дону (863)308-18-15  
 Рязань (4912)46-61-64  
 Самара (846)206-03-16  
 Санкт-Петербург (812)309-46-40  
 Саратов (845)249-38-78  
 Севастополь (8692)22-31-93  
 Саранск (8342)22-96-24  
 Симферополь (3652)67-13-56  
 Смоленск (4812)29-41-54  
 Сочи (862)225-72-31  
 Ставрополь (8652)20-65-13  
 Сургут (3462)77-98-35  
 Сыктывкар (8212)25-95-17  
 Тамбов (4752)50-40-97  
 Тверь (4822)63-31-35

Тольятти (8482)63-91-07  
 Томск (3822)98-41-53  
 Тула (4872)33-79-87  
 Тюмень (3452)66-21-18  
 Ульяновск (8422)24-23-59  
 Улан-Удэ (3012)59-97-51  
 Уфа (347)229-48-12  
 Хабаровск (4212)92-98-04  
 Чебоксары (8352)28-53-07  
 Челябинск (351)202-03-61  
 Череповец (8202)49-02-64  
 Чита (3022)38-34-83  
 Якутск (4112)23-90-97  
 Ярославль (4852)69-52-93

Россия +7(495)268-04-70

Казахстан +7(7172)727-132

Киргизия +996(312)96-26-47

<https://astralpool.nt-rt.ru/> || [aow@nt-rt.ru](mailto:aow@nt-rt.ru)